



MUNICIPAL EMPLOYEES' RETIREMENT SYSTEM OF MICHIGAN
ANNUAL ACTUARIAL VALUATION REPORT DECEMBER 31, 2016
WEXFORD CRC (8303)



Spring, 2017

Wexford CRC

In care of:
Municipal Employees' Retirement System of Michigan
1134 Municipal Way
Lansing, Michigan 48917

This report presents the results of the Annual Actuarial Valuation, prepared as of December 31, 2016. The report includes the determination of liabilities and contribution rates resulting from the participation of Wexford CRC (8303) in the Municipal Employees' Retirement System of Michigan ("MERS"). MERS is a nonprofit organization, independent from the State, that has provided retirement plans for municipal employees for 70 years. Wexford CRC is responsible for the employer contributions needed to provide MERS benefits for its employees and former employees under the Michigan Constitution and the MERS Plan Document.

The purpose of the December 31, 2016 annual actuarial valuation is to:

- Measure funding progress
- Establish contribution requirements for the fiscal year beginning January 1, 2018
- Provide actuarial information in connection with applicable Governmental Accounting Standards Board (GASB) statements

This valuation report should not be relied upon for any other purpose. Reliance on information contained in this report by anyone for anything other than the intended purpose could be misleading.

The valuation uses financial data, plan provision data, and participant data as of December 31, 2016 furnished by MERS. In accordance with Actuarial Standards of Practice No. 23, the data was checked for internal and year to year consistency as well as general reasonableness, but was not otherwise audited. CBIZ Retirement Plan Services does not assume responsibility for the accuracy or completeness of the data used in this valuation.

The actuarial assumptions and methods are adopted by the MERS Retirement Board, and are reviewed every five years in an Experience Study. The most recent study was completed in 2015. Please refer to the division-specific assumptions described in table(s) in this report, and to the Appendix on the MERS website at:
www.mersofmich.com/Portals/0/Assets/Resources/AAV-Appendix/MERS-2016AnnualActuarialValuation-Appendix.pdf.



The actuarial assumptions used for this valuation produce results that we believe are reasonable.

To the best of our knowledge, this report is complete and accurate, was prepared in conformity with generally recognized actuarial principles and practices, with the Actuarial Standards of Practice issued by the Actuarial Standards Board, and is in compliance with Act No. 220 of the Public Acts of 1996, as amended, and the MERS Plan Document as revised. All of the undersigned are members of the American Academy of Actuaries (MAAA), and meet the Qualification Standards of the American Academy of Actuaries to render the actuarial opinion contained herein. The Retirement Board of the Municipal Employees' Retirement System of Michigan confirms that the System provides for payment of the required employer contribution as described in Section 20m of Act No. 314 of 1965 (MCL 38.1140m).

This information is purely actuarial in nature. It is not intended to serve as a substitute for legal, accounting or investment advice.

This report was prepared at the request of the Retirement Board and may be provided only in its entirety by the municipality to other interested parties (MERS customarily provides the full report on request to associated third parties such as the auditor for the municipality). CBIZ Retirement Plan Services is not responsible for the consequences of any unauthorized use.

You should notify MERS if you disagree with anything contained in the report or are aware of any information that would affect the results of the report that have not been communicated to us. If you have reason to believe that the plan provisions are incorrectly described, that important plan provisions relevant to this valuation are not described, that conditions have changed since the calculations were made, that the information provided in this report is inaccurate or is in anyway incomplete, or if you need further information in order to make an informed decision on the subject matter in this report, please contact your Regional Manager at 1.800.767.MERS(6377).

Sincerely,

Cathy Nagy, MAAA, FSA
Jim Koss, MAAA, ASA
Curtis Powell, MAAA, EA

TABLE OF CONTENTS

	Page
Executive Summary	5
Employer Contribution Details	15
Table 1	
Benefit Provisions	16
Table 2	
Participant Summary	18
Table 3	
Reported Assets (Market Value)	19
Table 4	
Flow of Valuation Assets	20
Table 5	
Actuarial Accrued Liabilities and Valuation Assets	21
Table 6	
Actuarial Accrued Liabilities - Comparative Schedule	23
Table 7	
Division-Based Comparative Schedules	24
Tables 8 and 9	
Division-Based Layered Amortization Schedule	28
Table 10	
GASB 68 Information	32
Benefit Provision History	34
Plan Provisions, Actuarial Assumptions, and Actuarial Funding Method	36

Executive Summary

Actuarial Assumptions and Methods Adopted with the December 31, 2015 Valuations

The actuarial assumptions and methods are adopted by the MERS Retirement Board, and are reviewed every five years in an Experience Study. The Experience Study is a comprehensive, detailed analysis that reviews MERS' funding policy and compares actual experience with the current actuarial assumptions; the study recommends adjustments as necessary. The most recent study was completed in 2015 and changes to the assumptions and methods based on the 2015 Experience Study were first reflected in the December 31, 2015 valuations. The impact of these changes is being phased-in over a 5 year period. The phase-in allows the employer to spread the impact of the new assumptions over 5 fiscal years. This report continues to provide contributions both with and without the phase-in adjustments.

The assumptions and methods are described in the [Appendix](#) on the MERS website.

As part of the recent Experience Study, the following changes are first reflected in the December 31, 2016 annual valuation:

- The asset smoothing was changed from 10 to 5 years. The gain (loss) recognized each year will be 20% of the current year's gain (loss) plus 20% of the gain (loss) from each of the 4 preceding years. The cumulative difference between the market value and valuation assets as of December 31, 2015 will be recognized over 4 years.
- Annual changes in Unfunded Accrued Liability (UAL) will be amortized over fixed periods, creating "layers" of UAL. This will require removing and creating "layers" of UAL on an annual basis.
 - o Once the amortization period drops below 15 years (10 years for closed divisions), any future liability and asset gains or losses will be spread over a 15-year fixed period for open divisions and a 10-year fixed period for closed divisions — creating "layers" of UAL on an annual basis.
 - o This transparent method allows tracking of what changed your UAL, and sets a fixed period in time in which that UAL change will be fully funded.

MERS created a dedicated resource page on their website for additional information on these topics (<http://www.mersofmich.com/Employer/Work-Scenarios/Unfunded-Liability>).

Funded Ratio and Required Employer Contributions

The MERS Defined Benefit Plan is an agent multiple-employer plan, meaning that assets are pooled for investment purposes but separate accounts are maintained for each individual employer. Each municipality is responsible for their own plan liabilities; MERS does not borrow from one municipality's account to pay for another.

The funded ratio of a plan is the percentage of the dollar value of the accrued benefits that is covered by the actuarial value of assets.

Your Funded Ratio:

	12/31/2016	12/31/2015
Funded Ratio	74%	64%

Michigan Law requires that pension plans be pre-funded, meaning money is set aside now to pay for future benefits. Pension plans are usually funded by employer and employee contributions, and investment income.

How quickly a plan attains the 100% funding goal depends on many factors such as:

- The current funded ratio
- The future experience of the plan
- The amortization period

It is more important to look at the trend in the funded ratio over a period of time than at a particular point in time.

Your Required Employer Contributions:

Your computed employer contributions are shown in the following table. Employee contributions, if any, are in addition to the computed employer contributions. Changes to the assumptions and methods based on the 2015 Experience Study were first reflected in the December 31, 2015 valuations. The impact of these changes is being phased-in over a 5 year period. The phase-in allows the employer to spread the impact of the new assumptions over 5 fiscal years. This valuation reflects the second year of the phase-in.

Your minimum required contribution is the amount in the "Phase-in" columns. By default, MERS will invoice you the phased-in contribution amount, but strongly encourages you to contribute more than the minimum required contribution. If for 2017 your municipality is making employer contributions based on rates without the phase-in applied, contact MERS to ensure this rate is used again for 2018 and not the defaulted phase-in rates.

	Percentage of Payroll				Monthly \$ Based on Projected Payroll			
	Phase-in	No Phase-in	Phase-in	No Phase-in	Phase-in	No Phase-in	Phase-in	No Phase-in
Valuation Date:	12/31/2016	12/31/2016	12/31/2015	12/31/2015	12/31/2016	12/31/2016	12/31/2015	12/31/2015
Fiscal Year Beginning:	January 1, 2018	January 1, 2018	January 1, 2017	January 1, 2017	January 1, 2018	January 1, 2018	January 1, 2017	January 1, 2017
Division								
01 - General	-	-	-	-	\$ 19,829	\$ 21,845	\$ 21,108	\$ 23,796
10 - Admn Empl	-	-	-	-	7,722	8,634	11,155	12,371
HA - Admin Empl hired aftr	0.00%	0.00%	4.10%	4.10%	0	0	313	313
HB - General hired af 8/1/2	3.85%	3.85%	3.69%	3.69%	956	956	694	694
Municipality Total					\$ 28,507	\$ 31,435	\$ 33,270	\$ 37,174

Employee contribution rates reflected in the valuations are shown below:

Valuation Date:	Employee Contribution Rate	
	12/31/2016	12/31/2015
Division		
01 - General	4.00%	4.00%
10 - Admn Empl	2.00%	2.00%
HA - Admin Empl hired aftr	0.00%	0.00%
HB - General hired af 8/1/2	0.00%	0.00%

The employer may contribute more than the minimum required contributions, as these additional contributions will earn investment income and may result in lower future contribution requirements.

MERS strongly encourages employers to contribute more than the minimum contribution shown above.

Assuming that experience of the plan meets actuarial assumptions:

- To accelerate to a 100% funding ratio in 10 years, estimated monthly employer contributions for the entire employer would be \$ 48,262, instead of \$ 31,435.
- To accelerate to a 100% funding ratio in 20 years, estimated monthly employer contributions for the entire employer would be \$ 32,755, instead of \$ 31,435.

If you are interested in making additional contributions, please contact MERS and they can assist you with evaluating your options.

How and Why Do These Numbers Change?

In a defined benefit plan contributions vary from one annual actuarial valuation to the next as a result of the following:

- Changes in benefit provisions (see Table 2)
- Changes in actuarial assumptions and methods (see the [Appendix](#))
- Experience of the plan (investment experience and demographic experience); this is the difference between actual experience of the plan and the actuarial assumptions. For example:
 - o Lower actual investment returns would result in higher required employer contributions, and vice-versa.
 - o Smaller than assumed pay increases would lower required employer contributions.
 - o Reductions in the number of active employees would lower required contribution dollars, but would usually increase the contribution rate expressed as a percentage of (the now lower) payroll.
 - o Retirements at earlier ages than assumed would usually increase required employer contributions.
 - o More non-vested terminations of employment than assumed would decrease required contributions.
 - o More disabilities or survivor (death) benefits than assumed would increase required contributions.
 - o Longer lifetimes after retirement than assumed would increase required employer contributions.

Actuarial valuations do not affect the ultimate cost of the plan; the benefit payments (current and future) determine the cost of the plan. Actuarial valuations only affect the timing of the contributions into the plan. Because assumptions are for the long term, plan experience will not match the actuarial assumptions in any given year (except by coincidence). Each annual actuarial valuation will adjust the required employer contributions up or down based on the prior year's actual experience.

Comments on Asset Smoothing

The actuarial value of assets, used to determine both your funded ratio and your required employer contribution, is based on a smoothed value of assets (10-year smoothing prior to 2016; 5-year smoothing beginning in 2016). A smoothing method reduces the volatility of the valuation results, which affects your required employer contribution and funded ratio. The smoothed actuarial rate of return for 2016 was 5.14%.

As of December 31, 2016 the actuarial value of assets is 108% of market value. This means that meeting the actuarial assumption in the next few years will require average annual market returns that exceed the 7.75% investment return assumption.

If the December 31, 2016 valuation results were based on market value on that date instead of smoothed funding value: i) the funded percent of your entire municipality would be 69% (instead of 74%); and ii) your total employer contribution requirement for the fiscal year starting January 1, 2018 would be \$ 433,164 (instead of \$ 377,220).

The asset smoothing method is a powerful tool for reducing the volatility of your required employer contributions. **However, if the current 8% difference between the smoothed value and the market value of assets is not made up, the result would be gradual increases in your employer contribution requirement over the next few years (to around the levels described above).**

Risk Characteristics of Defined Benefit Plans

It is important to understand that Defined Benefit retirement plans, the plan sponsor, and the plan participants are exposed to certain risks. While risks cannot be eliminated entirely, they can be managed through various strategies. Below are a few examples of risk (this is not an all-inclusive list):

- Economic - investment return, wage inflation, etc.
- Demographic - longevity, disability, retirement, etc.
- Plan Sponsor and Employees - contribution volatility, attract/retain employees, etc.

The MERS Retirement Board adopts certain assumptions and methods to manage the economic and demographic risks, and the contribution volatility risks. For example, the investment risk is the largest economic risk and is managed by having a balanced portfolio and a clearly defined investment strategy. Demographic risks are managed by preparing special studies called experience studies on a regular basis to determine if the assumptions used are reasonable compared to the experience. Risk may be managed through a plan design that provides benefits that are sustainable in the long run. An Experience Study is completed every five years to review the assumptions and methods. The next Experience Study will be completed in 2020.

Alternate Scenarios to Estimate the Potential Volatility of Results ("What If Scenarios")

The calculations in this report are based on assumptions about long-term economic and demographic behavior. These assumptions will never materialize in a given year, except by coincidence. Therefore the results will vary from one year to the next. The volatility of the results depends upon the characteristics of the plan. For example:

- Open divisions that have substantial assets compared to their active employee payroll will have more volatile employer contribution rates due to investment return fluctuations.
- Open divisions that have substantial accrued liability compared to their active employee payroll will have more volatile employer contribution rates due to demographic experience fluctuations.
- Small divisions will have more volatile contribution patterns than larger divisions because statistical fluctuations are relatively larger among small populations.
- Shorter amortization periods result in more volatile contribution patterns.

The analysis in this section is intended to review the potential volatility of the actuarial valuation results. It is important to note that calculations in this report are mathematical estimates based upon assumptions regarding future events, which may or may not materialize. Actuarial calculations can and do vary from one valuation to the next, sometimes significantly depending on the group's size.

Many assumptions are important in determining the required employer contributions. In the table below, we show the impact of varying one actuarial assumption: the future annual rate of investment return. Lower investment returns would result in higher required employer contributions, and vice-versa.

The relative impact of each investment return scenario below will vary from year to year, as the participant demographics change. The impact of each scenario should be analyzed for a given year, not from year to year. The results in the table are based on the December 31, 2016 valuation, and are for the municipality in total, not by division. These results do not reflect a 5-year phase in of the impact of the new actuarial assumptions.

	Assumed Future Annual Smoothed Rate of Investment Return			
	Lower Future Annual Returns		Valuation Assumption	Higher Returns
	5.75%	6.75%	7.75%	8.75%
12/31/2016 Valuation Results				
Accrued Liability	\$ 18,317,491	\$ 16,198,591	\$ 14,434,589	\$ 12,954,109
Valuation Assets	\$ 10,643,445	\$ 10,643,445	\$ 10,643,445	\$ 10,643,445
Unfunded Accrued Liability	\$ 7,674,046	\$ 5,555,146	\$ 3,791,144	\$ 2,310,664
Funded Ratio	58%	66%	74%	82%
Monthly Normal Cost	\$ 19,093	\$ 13,945	\$ 10,119	\$ 7,245
Monthly Amortization Payment	\$ 39,531	\$ 31,742	\$ 21,257	\$ 16,123
Total Employer Contribution¹	\$ 58,624	\$ 45,687	\$ 31,435	\$ 23,368

¹ If assets exceed accrued liabilities for a division, the division's amortization payment is negative and is used to reduce the division's employer contribution requirement. If the overfunding credit is larger than the normal cost, the division's full credit is included in the municipality's amortization payment above but the division's total contribution requirement is zero. This can cause the displayed normal cost and amortization payment to not add up to the displayed total employer contribution.

Projection Scenarios

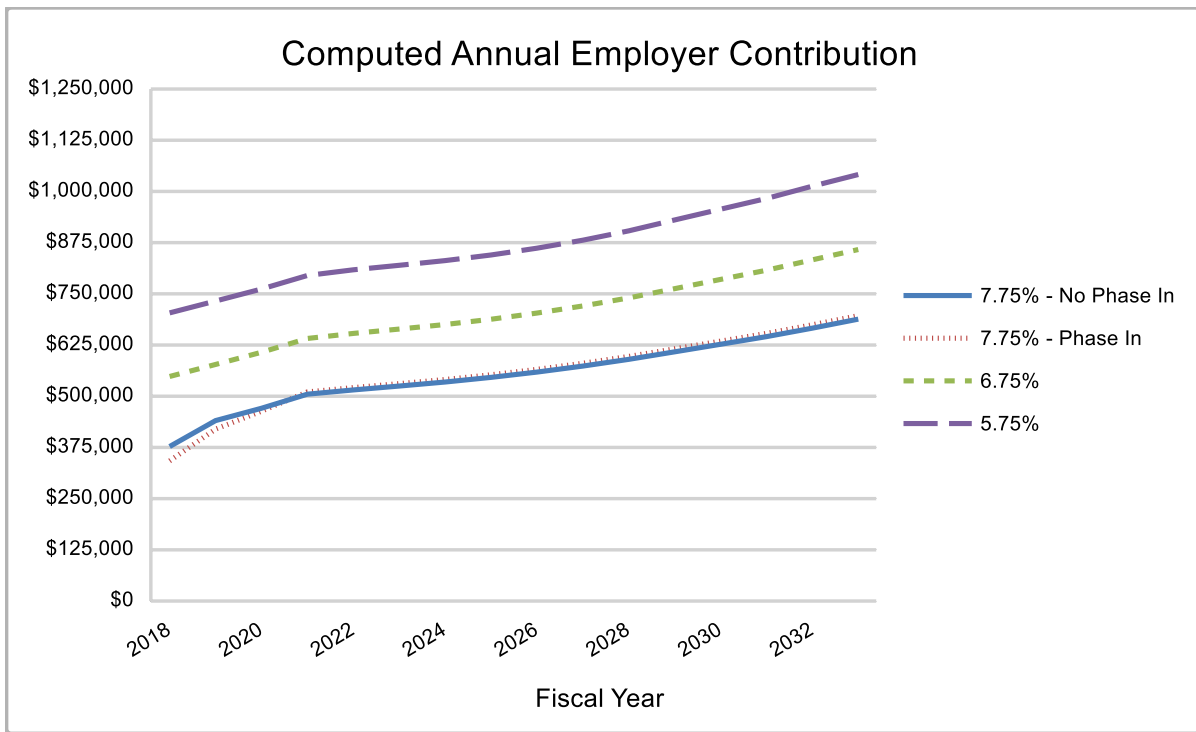
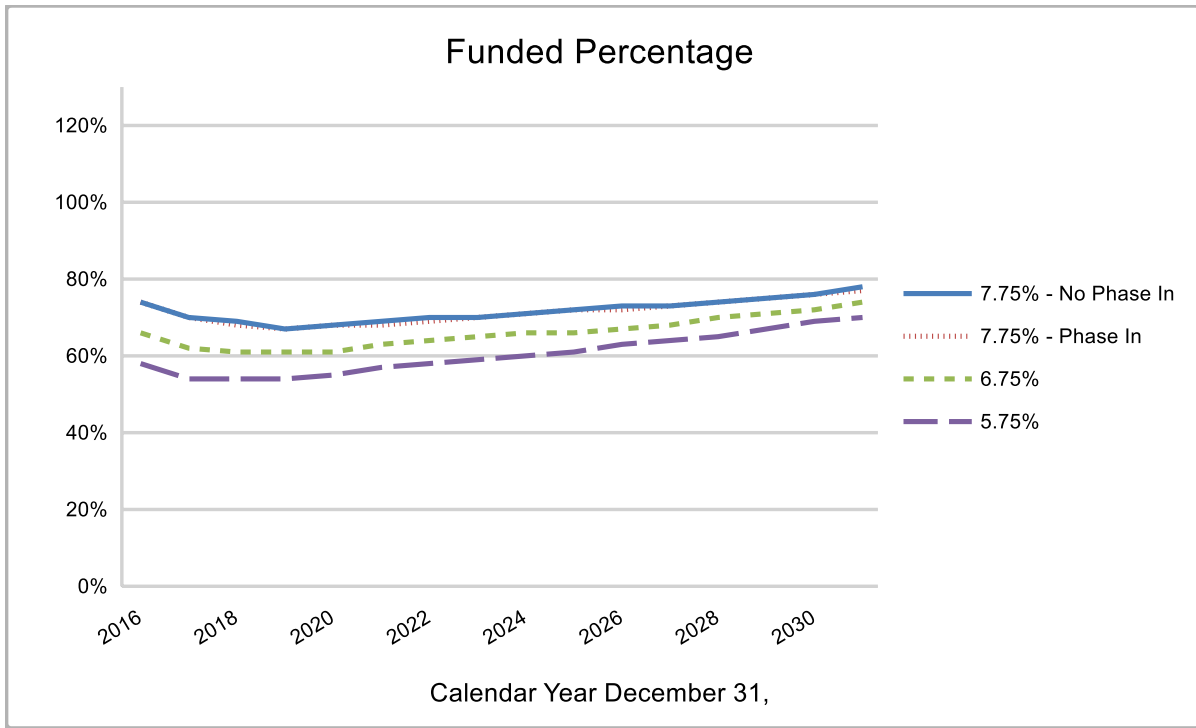
The next two pages show projections of the plan's funded ratio and computed employer contributions under the actuarial assumptions used in the valuation and alternate assumed long-term investment return scenarios. All four projections take into account the past investment losses that will continue to affect the smoothed rate of return in the short term. Under the 7.75% scenarios, two sets of projections are shown:

- Based on the phase-in over 5 fiscal years (beginning in 2017) of the increased contribution requirements associated with the new actuarial assumptions. This projects your minimum required contribution.
- Based on no phase-in of the increased contribution requirements.

The 7.75% scenarios provide an estimate of computed employer contributions based on current actuarial assumptions, and a projected 7.75% market return. The other two scenarios may be useful if the municipality chooses to budget more conservatively, and make contributions in addition to the minimum requirements. The 6.75% and 5.75% projections provide an indication of the potential required employer contribution if MERS were to realize investment returns of 6.75% and 5.75% over the long-term.

The projections are shown both in tabular and graphical form in total for the employer. The tables show projections for six years. The graphs show projections for fifteen years.

Valuation Year Ending 12/31	Fiscal Year Beginning 1/1	Actuarial Accrued Liability	Valuation Assets	Funded Percentage	Computed Annual Employer Contribution
7.75% Assumed Interest Discount Rate and Future Annual Market Rate of Return					
WITH 5-YEAR PHASE-IN					
2016	2018	\$ 14,434,589	\$ 10,643,445	74%	\$ 342,084
2017	2019	15,000,000	10,500,000	70%	420,000
2018	2020	15,500,000	10,600,000	68%	463,000
2019	2021	16,000,000	10,700,000	67%	511,000
2020	2022	16,400,000	11,100,000	68%	521,000
2021	2023	16,800,000	11,500,000	68%	531,000
NO 5-YEAR PHASE-IN					
2016	2018	\$ 14,434,589	\$ 10,643,445	74%	\$ 377,220
2017	2019	15,000,000	10,500,000	70%	441,000
2018	2020	15,500,000	10,600,000	69%	471,000
2019	2021	16,000,000	10,700,000	67%	505,000
2020	2022	16,400,000	11,200,000	68%	515,000
2021	2023	16,800,000	11,600,000	69%	525,000
6.75% Assumed Interest Discount Rate and Future Annual Market Rate of Return					
NO 5-YEAR PHASE-IN					
2016	2018	\$ 16,198,591	\$ 10,643,445	66%	\$ 548,244
2017	2019	16,800,000	10,400,000	62%	578,000
2018	2020	17,300,000	10,600,000	61%	607,000
2019	2021	17,800,000	10,800,000	61%	641,000
2020	2022	18,200,000	11,200,000	61%	653,000
2021	2023	18,700,000	11,700,000	63%	664,000
5.75% Assumed Interest Discount Rate and Future Annual Market Rate of Return					
NO 5-YEAR PHASE-IN					
2016	2018	\$ 18,317,491	\$ 10,643,445	58%	\$ 703,488
2017	2019	18,900,000	10,300,000	54%	732,000
2018	2020	19,500,000	10,500,000	54%	762,000
2019	2021	20,000,000	10,800,000	54%	795,000
2020	2022	20,400,000	11,300,000	55%	809,000
2021	2023	20,900,000	11,800,000	57%	820,000



Employer Contribution Details For the Fiscal Year Beginning January 1, 2018

Table 1

Division	Employer Contributions ¹			Computed Employer Contribution With Phase-In	Blended ER Rate No Phase-In ⁵	Blended ER Rate With Phase-In ⁵	Employee Contribution Rate	Employee Contribution Conversion Factor ²
	Normal Cost	Payment of the Unfunded Accrued Liability ⁴	Computed Employer Contribution No Phase-In					
Percentage of Payroll								
01 - General	-	-	-	-	26.91%	24.53%	4.00%	
10 - Admn Empl	-	-	-	-			2.00%	
HA - Admin Empl hired	0.00%	0.00%	0.00%	0.00%			0.00%	
HB - General hired af 8	3.76%	0.09%	3.85%	3.85%	26.91%	24.53%	0.00%	0.94%
Estimated Monthly Contribution³								
01 - General	\$ 6,069	\$ 15,776	\$ 21,845	\$ 19,829				
10 - Admn Empl	3,117	5,517	8,634	7,722				
HA - Admin Empl hired	0	(59)	0	0				
HB - General hired af 8	933	23	956	956				
Total Municipality	\$ 10,119	\$ 21,257	\$ 31,435	\$ 28,507				
Estimated Annual Contribution³	\$ 121,428	\$ 255,084	\$ 377,220	\$ 342,084				

¹ The above employer contribution requirements are in addition to the employee contributions, if any.

² If employee contributions are increased/decreased by 1.00% of pay, the employer contribution requirement will decrease/increase by the Employee Contribution Conversion Factor. The conversion factor is usually under 1%, because employee contributions may be refunded at termination of employment, and not used to fund retirement pensions. Employer contributions will all be used to fund pensions.

³ For divisions that are open to new hires, estimated contributions are based on projected fiscal year payroll. Actual contributions will be based on actual reported monthly pays, and will be different from the above amounts. For divisions that will have no new hires (ie closed divisions), invoices will be based on the above dollar amounts which are based on projected fiscal year payroll. See description of Open Divisions and Closed Divisions in the [Appendix](#).

⁴ If projected assets exceed projected liabilities as of the beginning of the January 1, 2018 fiscal year, the negative unfunded accrued liability is treated as overfunding credit and is used to reduce the contribution. This amortization is used to reduce the employer contribution rate. Note that if the overfunding credit is larger than the normal cost, the full credit is shown above but the total contribution requirement is zero. This will cause the displayed normal cost and unfunded accrued liability contributions to not add across.

⁵ For linked divisions, the employer will be invoiced the Computed Employer Contribution with Phase-in rate shown above for each linked division (a contribution rate for the open division; a contribution dollar for the closed-but-linked division), unless the employer elects to contribute the Blended Employer Contribution rate shown above, by contacting MERS at 800-767-2308.

Please see the Comments on Asset Smoothing in the Executive Summary of this report.

Benefit Provisions

Table 2

01 - General: Closed to new hires, linked to Division HB

	2016 Valuation	2015 Valuation
Benefit Multiplier:	2.50% Multiplier (80% max)	2.50% Multiplier (80% max)
Normal Retirement Age:	60	60
Vesting:	10 years	10 years
Early Retirement (Unreduced):	55/25	55/25
Early Retirement (Reduced):	50/25	50/25
	55/15	55/15
Final Average Compensation:	5 years	5 years
COLA for Future Retirees:	2.50% (Non-Compound)	2.50% (Non-Compound)
Employee Contributions:	4%	4%
RS50% Percentage:	50%	50%
Act 88:	Yes (Adopted 6/2/1993)	Yes (Adopted 6/2/1993)

10 - Admn Empl: Closed to new hires, linked to Division HA

	2016 Valuation	2015 Valuation
Benefit Multiplier:	2.50% Multiplier (80% max)	2.50% Multiplier (80% max)
Normal Retirement Age:	60	60
Vesting:	10 years	10 years
Early Retirement (Unreduced):	55/25	55/25
Early Retirement (Reduced):	50/25	50/25
	55/15	55/15
Final Average Compensation:	5 years	5 years
COLA for Future Retirees:	2.50% (Non-Compound)	2.50% (Non-Compound)
Employee Contributions:	2%	2%
RS50% Percentage:	50%	50%
Act 88:	Yes (Adopted 6/2/1993)	Yes (Adopted 6/2/1993)

HA - Admin Empl hired aftr 8/1/10: Open Division, linked to Division 10

	2016 Valuation	2015 Valuation
Benefit Multiplier:	Hybrid Plan - 1.00% Multiplier	Hybrid Plan - 1.00% Multiplier
Normal Retirement Age:	60	60
Vesting:	6 years	6 years
Early Retirement (Unreduced):	-	-
Early Retirement (Reduced):	-	-
Final Average Compensation:	3 years	3 years
Employee Contributions:	0%	0%
Act 88:	Yes (Adopted 6/2/1993)	Yes (Adopted 6/2/1993)

Table 2 (continued)**HB - General hired af 8/1/2010: Open Division, linked to Division 01**

	2016 Valuation	2015 Valuation
Benefit Multiplier:	Hybrid Plan - 1.00% Multiplier	Hybrid Plan - 1.00% Multiplier
Normal Retirement Age:	60	60
Vesting:	6 years	6 years
Early Retirement (Unreduced):	-	-
Early Retirement (Reduced):	-	-
Final Average Compensation:	3 years	3 years
Employee Contributions:	0%	0%
Act 88:	Yes (Adopted 6/2/1993)	Yes (Adopted 6/2/1993)

Participant Summary

Table 3

Division	2016 Valuation		2015 Valuation		2016 Valuation		
	Number	Annual Payroll ¹	Number	Annual Payroll ¹	Average Age	Average Benefit Service ²	Average Eligibility Service ²
01 - General							
Active Employees	17	\$ 768,526	17	\$ 701,348	52.1	21.0	21.0
Vested Former Employees	11	130,175	10	126,476	50.4	12.8	14.9
Retirees and Beneficiaries	38	499,403	40	520,888	76.2		
10 - Admn Empl							
Active Employees	5	\$ 349,808	5	\$ 322,972	52.9	19.4	19.4
Vested Former Employees	1	10,666	1	10,666	48.8	7.8	19.4
Retirees and Beneficiaries	6	197,795	6	193,707	69.3		
HA - Admin Empl hired af							
Active Employees	0	\$ 0	1	\$ 38,850	0.0	0.0	0.0
Vested Former Employees	1	2,379	0	0	35.3	6.0	6.0
Retirees and Beneficiaries	0	0	0	0	0.0		
HB - General hired af 8/1							
Active Employees	4	\$ 176,001	4	\$ 140,607	31.1	2.6	2.6
Vested Former Employees	0	0	0	0	0.0	0.0	0.0
Retirees and Beneficiaries	0	0	0	0	0.0		
Total Municipality							
Active Employees	26	\$ 1,294,335	27	\$ 1,203,777	49.0	17.9	17.9
Vested Former Employees	13	143,220	11	137,142	49.1	11.9	14.6
Retirees and Beneficiaries	44	697,198	46	714,595	75.3		
Total Participants	83		84				

¹ Annual payroll for active employees; annual deferred benefits payable for vested former employees; annual benefits being paid for retirees and beneficiaries.

² Description can be found under Miscellaneous and Technical Assumptions in the [Appendix](#).

Reported Assets (Market Value)

Table 4

Division	2016 Valuation		2015 Valuation	
	Employer and Retiree ¹	Employee ²	Employer and Retiree ¹	Employee ²
01 - General	\$ 6,310,694	\$ 498,228	\$ 5,184,958	\$ 463,547
10 - Admn Empl	2,940,557	101,457	2,017,298	93,664
HA - Admin Empl hired aftr 8/1/10	10,299	0	7,554	0
HB - General hired af 8/1/2010	20,386	0	12,774	0
Municipality Total	\$ 9,281,936	\$ 599,685	\$ 7,222,584	\$ 557,211
Combined Reserves	\$ 9,881,621		\$ 7,779,795	

¹ Reserve for Employer Contributions and Benefit Payments

² Reserve for Employee Contributions

The December 31, 2016 valuation assets are equal to 1.077095 times the reported market value of assets (compared to 1.135382 as of December 31, 2015). The derivation of valuation assets is described, and detailed calculations of valuation assets are shown, in the [Appendix](#).

Flow of Valuation Assets

Table 5

Year Ended 12/31	Employer Contributions		Employee Contributions	Investment Income	Benefit Payments	Employee Contribution Refunds	Net Transfers	Valuation Asset Balance
	Required	Additional						
2006	\$ 325,582		\$ 32,648	\$ 499,987	\$ (592,168)	\$ 0	\$ 43,387	\$ 6,570,833
2007	322,938		31,311	531,902	(609,048)	0	0	6,847,936
2008	339,364		31,243	292,952	(597,341)	0	0	6,914,154
2009	341,937		31,120	274,583	(605,928)	0	0	6,955,866
2010	345,448		36,844	354,063	(615,935)	0	39,027	7,115,313
2011	338,132	\$ 0	49,965	356,434	(645,104)	0	74,336	7,289,076
2012	365,925	13,360	37,295	321,213	(651,306)	0	0	7,375,563
2013	382,459	206,455	38,673	450,243	(679,645)	(3,841)	0	7,769,907
2014	402,464	214,621	39,632	454,527	(685,333)	0	0	8,195,818
2015	413,007	429,549	36,106	454,390	(695,831)	0	0	8,833,039
2016	412,498	1,475,370	37,737	594,029	(709,228)	0	0	10,643,445

Notes:

Transfers in and out are usually related to the transfer of participants between municipalities, and to employer and employee payments for service credit purchases (if any) that the governing body has approved.

Additional employer contributions, if any, are shown separately starting in 2011. Prior to 2011, additional contributions are combined with the required employer contributions.

In the actuarial valuation additional employer contributions are combined with required contributions and used to reduce computed future required employer contributions.

The investment income column reflects the recognized investment income based on the smoothed value of assets. It does not reflect the market value investment return in any given year.

Actuarial Accrued Liabilities and Valuation Assets As of December 31, 2016

Table 6

Division	Actuarial Accrued Liability	Valuation Assets ¹	Percent Funded	Unfunded (Overfunded) Accrued Liabilities
01 - General				
Active Employees	\$ 4,492,962	\$ 1,707,700	38.0%	\$ 2,785,262
Vested Former Employees	898,757	898,757	100.0%	0
Retirees And Beneficiaries	4,713,184	4,713,184	100.0%	0
Pending Refunds	<u>14,215</u>	<u>14,215</u>	100.0%	<u>0</u>
Total	\$ 10,119,118	\$ 7,333,856	72.5%	\$ 2,785,262
10 - Admn Empl				
Active Employees	\$ 1,909,706	\$ 899,453	47.1%	\$ 1,010,253
Vested Former Employees	62,355	62,355	100.0%	0
Retirees And Beneficiaries	2,314,730	2,314,730	100.0%	0
Pending Refunds	<u>0</u>	<u>0</u>	0.0%	<u>0</u>
Total	\$ 4,286,791	\$ 3,276,538	76.4%	\$ 1,010,253
HA - Admin Empl hired aftr 8/1/10				
Active Employees	\$ 0	\$ 7,205	0.0%	\$ (7,205)
Vested Former Employees	3,888	3,888	100.0%	0
Retirees And Beneficiaries	0	0	0.0%	0
Pending Refunds	<u>0</u>	<u>0</u>	0.0%	<u>0</u>
Total	\$ 3,888	\$ 11,093	285.3%	\$ (7,205)
HB - General hired af 8/1/2010				
Active Employees	\$ 24,792	\$ 21,958	88.6%	\$ 2,834
Vested Former Employees	0	0	0.0%	0
Retirees And Beneficiaries	0	0	0.0%	0
Pending Refunds	<u>0</u>	<u>0</u>	0.0%	<u>0</u>
Total	\$ 24,792	\$ 21,958	88.6%	\$ 2,834
Total Municipality				
Active Employees	\$ 6,427,460	\$ 2,636,316	41.0%	\$ 3,791,144
Vested Former Employees	965,000	965,000	100.0%	0
Retirees and Beneficiaries	7,027,914	7,027,914	100.0%	0
Pending Refunds	<u>14,215</u>	<u>14,215</u>	100.0%	<u>0</u>
Total Participants	\$ 14,434,589	\$ 10,643,445	73.7%	\$ 3,791,144
The following results show the combined accrued liabilities and assets for each set of linked divisions. These results are already included in the table above.				
Linked Divisions HB, 01				
Active Employees	\$ 4,517,754	\$ 1,729,658	38.3%	\$ 2,788,096
Vested Former Employees	898,757	898,757	100.0%	0
Retirees and Beneficiaries	4,713,184	4,713,184	100.0%	0
Pending Refunds	<u>14,215</u>	<u>14,215</u>	100.0%	<u>0</u>
Total	\$ 10,143,910	\$ 7,355,814	72.5%	\$ 2,788,096

Table 6 (continued)

Division	Actuarial Accrued Liability	Valuation Assets¹	Percent Funded	Unfunded (Overfunded) Accrued Liabilities
Linked Divisions HA, 10				
Active Employees	\$ 1,909,706	\$ 906,658	47.5%	\$ 1,003,048
Vested Former Employees	66,243	66,243	100.0%	0
Retirees and Beneficiaries	2,314,730	2,314,730	100.0%	0
Pending Refunds	0	0	0.0%	0
Total	\$ 4,290,679	\$ 3,287,631	76.6%	\$ 1,003,048

¹ Includes both employer and employee assets.

Please see the Comments on Asset Smoothing in the Executive Summary of this report.

See Section 46 of the Plan Document for MERS Fiscal Responsibility policy, on the MERS website at:
<https://employerportal.mersofmich.com/SharePointFormsService/Default.aspx?Publication=MERSPlanDocument.pdf>.

Actuarial Accrued Liabilities - Comparative Schedule

Table 7

Valuation Date December 31	Actuarial Accrued Liability	Valuation Assets	Percent Funded	Unfunded (Overfunded) Accrued Liabilities
2002	\$ 8,211,393	\$ 5,834,146	71%	\$ 2,377,247
2003	8,434,677	5,938,257	70%	2,496,420
2004	9,026,952	6,092,059	67%	2,934,893
2005	9,466,122	6,261,397	66%	3,204,725
2006	9,977,111	6,570,833	66%	3,406,278
2007	10,228,540	6,847,936	67%	3,380,604
2008	10,711,280	6,914,154	65%	3,797,126
2009	10,935,986	6,955,866	64%	3,980,120
2010	11,403,285	7,115,313	62%	4,287,972
2011	11,691,866	7,289,076	62%	4,402,790
2012	12,028,294	7,375,563	61%	4,652,731
2013	12,497,787	7,769,907	62%	4,727,880
2014	12,837,641	8,195,818	64%	4,641,823
2015	13,738,535	8,833,039	64%	4,905,496
2016	14,434,589	10,643,445	74%	3,791,144

Notes: Actuarial assumptions were revised for the 2004, 2008, 2009, 2010, 2011, 2012 and 2015 actuarial valuations.

Division 01 - General

Table 8-01: Actuarial Accrued Liabilities - Comparative Schedule

Valuation Date December 31	Actuarial Accrued Liability	Valuation Assets	Percent Funded	Unfunded (Overfunded) Accrued Liabilities
2006	\$ 7,932,110	\$ 5,601,464	71%	\$ 2,330,646
2007	8,028,719	5,763,913	72%	2,264,806
2008	8,366,404	5,731,084	69%	2,635,320
2009	8,444,516	5,647,288	67%	2,797,228
2010	8,618,120	5,625,655	65%	2,992,465
2011	8,507,210	5,577,918	66%	2,929,292
2012	8,493,456	5,588,455	66%	2,905,001
2013	8,832,627	5,832,767	66%	2,999,860
2014	9,033,392	6,078,050	67%	2,955,342
2015	9,632,852	6,413,211	67%	3,219,641
2016	10,119,118	7,333,856	73%	2,785,262

Notes: Actuarial assumptions were revised for the 2008, 2009, 2010, 2011, 2012 and 2015 actuarial valuations.

Table 9-01: Computed Employer Contributions - Comparative Schedule

Valuation Date December 31	Active Employees		Computed Employer Contribution ¹	Employee Contribution Rate ²
	Number	Annual Payroll		
2006	32	\$ 1,224,590	20.40%	2.00%
2007	30	1,166,263	20.69%	2.00%
2008	30	1,192,512	22.57%	2.00%
2009	28	1,138,492	24.18%	2.00%
2010	28	1,105,337	25.47%	2.00%
2011	24	908,393	\$ 21,274	4.00%
2012	23	918,675	\$ 21,707	4.00%
2013	21	876,247	\$ 22,310	4.00%
2014	19	823,433	\$ 22,004	4.00%
2015	17	701,348	\$ 23,796	4.00%
2016	17	768,526	\$ 21,845	4.00%

¹ For open divisions, a percent of pay contribution is shown. For closed divisions, a monthly dollar contribution is shown.

² For each valuation year, the computed employer contribution is based on the employee rate. If the employee rate changes during the applicable fiscal year, the computed employer contribution will be adjusted.

Note: The contributions shown in Table 9 for the 12/31/2015 through 12/31/2019 valuations do **not** reflect the phase-in of the increased contribution requirements associated with the new actuarial assumptions. The full contribution without phase-in is shown in Table 9 above. The contribution requirements including the 5-year phase-in are shown on page 7.

See the Benefit Provision History on page 34 for past benefit provision changes.

Division 10 - Admn Empl

Table 8-10: Actuarial Accrued Liabilities - Comparative Schedule

Valuation Date December 31	Actuarial Accrued Liability	Valuation Assets	Percent Funded	Unfunded (Overfunded) Accrued Liabilities
2006	\$ 2,045,001	\$ 969,369	47%	\$ 1,075,632
2007	2,199,821	1,084,023	49%	1,115,798
2008	2,344,876	1,183,070	50%	1,161,806
2009	2,491,470	1,308,578	53%	1,182,892
2010	2,785,165	1,489,658	53%	1,295,507
2011	3,181,336	1,708,629	54%	1,472,707
2012	3,530,851	1,781,246	50%	1,749,605
2013	3,655,704	1,926,086	53%	1,729,618
2014	3,788,309	2,101,275	56%	1,687,034
2015	4,081,126	2,396,748	59%	1,684,378
2016	4,286,791	3,276,538	76%	1,010,253

Notes: Actuarial assumptions were revised for the 2008, 2009, 2010, 2011, 2012 and 2015 actuarial valuations.

Table 9-10: Computed Employer Contributions - Comparative Schedule

Valuation Date December 31	Active Employees		Computed Employer Contribution ¹	Employee Contribution Rate ²
	Number	Annual Payroll		
2006	7	\$ 360,582	25.78%	2.00%
2007	7	379,296	25.94%	2.00%
2008	7	399,705	26.27%	2.00%
2009	7	418,059	26.19%	2.00%
2010	7	362,262	30.57%	2.00%
2011	6	342,861	\$ 10,242	2.00%
2012	5	311,786	\$ 11,490	2.00%
2013	5	324,721	\$ 11,681	2.00%
2014	5	327,258	\$ 11,733	2.00%
2015	5	322,972	\$ 12,371	2.00%
2016	5	349,808	\$ 8,634	2.00%

¹ For open divisions, a percent of pay contribution is shown. For closed divisions, a monthly dollar contribution is shown.

² For each valuation year, the computed employer contribution is based on the employee rate. If the employee rate changes during the applicable fiscal year, the computed employer contribution will be adjusted.

Note: The contributions shown in Table 9 for the 12/31/2015 through 12/31/2019 valuations do **not** reflect the phase-in of the increased contribution requirements associated with the new actuarial assumptions. The full contribution without phase-in is shown in Table 9 above. The contribution requirements including the 5-year phase-in are shown on page 7.

See the Benefit Provision History on page 34 for past benefit provision changes.

Division HA - Admin Empl hired aftr 8/1/10

Table 8-HA: Actuarial Accrued Liabilities - Comparative Schedule

Valuation Date December 31	Actuarial Accrued Liability	Valuation Assets	Percent Funded	Unfunded (Overfunded) Accrued Liabilities
2011	\$ 1,378	\$ 925	67%	\$ 453
2012	2,539	3,050	120%	(511)
2013	4,831	4,712	98%	119
2014	8,252	6,507	79%	1,745
2015	11,234	8,577	76%	2,657
2016	3,888	11,093	285%	(7,205)

Notes: Actuarial assumptions were revised for the 2008, 2009, 2010, 2011, 2012 and 2015 actuarial valuations.

Table 9-HA: Computed Employer Contributions - Comparative Schedule

Valuation Date December 31	Active Employees		Computed Employer Contribution ¹	Employee Contribution Rate ²
	Number	Annual Payroll		
2011	1	\$ 27,400	4.03%	0.00%
2012	1	29,346	3.71%	0.00%
2013	1	32,500	3.98%	0.00%
2014	1	38,000	4.23%	0.00%
2015	1	38,850	4.10%	0.00%
2016	0	0	0.00%	0.00%

¹ For open divisions, a percent of pay contribution is shown. For closed divisions, a monthly dollar contribution is shown.

² For each valuation year, the computed employer contribution is based on the employee rate. If the employee rate changes during the applicable fiscal year, the computed employer contribution will be adjusted.

Note: The contributions shown in Table 9 for the 12/31/2015 through 12/31/2019 valuations do **not** reflect the phase-in of the increased contribution requirements associated with the new actuarial assumptions. The full contribution without phase-in is shown in Table 9 above. The contribution requirements including the 5-year phase-in are shown on page 7.

See the Benefit Provision History on page 34 for past benefit provision changes.

Division HB - General hired af 8/1/2010

Table 8-HB: Actuarial Accrued Liabilities - Comparative Schedule

Valuation Date December 31	Actuarial Accrued Liability	Valuation Assets	Percent Funded	Unfunded (Overfunded) Accrued Liabilities
2011	\$ 1,942	\$ 1,604	83%	\$ 338
2012	1,448	2,812	194%	(1,364)
2013	4,625	6,342	137%	(1,717)
2014	7,688	9,986	130%	(2,298)
2015	13,323	14,503	109%	(1,180)
2016	24,792	21,958	89%	2,834

Notes: Actuarial assumptions were revised for the 2008, 2009, 2010, 2011, 2012 and 2015 actuarial valuations.

Table 9-HB: Computed Employer Contributions - Comparative Schedule

Valuation Date December 31	Active Employees		Computed Employer Contribution ¹	Employee Contribution Rate ²
	Number	Annual Payroll		
2011	1	\$ 34,746	3.75%	0.00%
2012	2	53,072	3.40%	0.00%
2013	3	120,446	3.56%	0.00%
2014	2	88,301	3.32%	0.00%
2015	4	140,607	3.69%	0.00%
2016	4	176,001	3.85%	0.00%

¹ For open divisions, a percent of pay contribution is shown. For closed divisions, a monthly dollar contribution is shown.

² For each valuation year, the computed employer contribution is based on the employee rate. If the employee rate changes during the applicable fiscal year, the computed employer contribution will be adjusted.

Note: The contributions shown in Table 9 for the 12/31/2015 through 12/31/2019 valuations do **not** reflect the phase-in of the increased contribution requirements associated with the new actuarial assumptions. The full contribution without phase-in is shown in Table 9 above. The contribution requirements including the 5-year phase-in are shown on page 7.

See the Benefit Provision History on page 34 for past benefit provision changes.

Division 01 - General

Table 10-01: Layered Amortization Schedule

Type of UAL	Date Established	Original Balance	Original Amortization Period**	Amounts for Fiscal Year Beginning 1/1/2018		
				Outstanding UAL Balance*	Amortization Period**	Amortization Payment
Initial	12/31/2015	\$ 3,219,641	23	\$ 3,297,541	22	\$ 224,880
Gain/Loss	12/31/2016	(484,050)	22	(521,564)	22	(35,568)
Total				\$ 2,775,977		\$ 189,312

* This is the remaining balance as of the valuation date, projected to the beginning of the fiscal year shown above.

** Please see the [Appendix](#) on the MERS website for a description of the amortization policy.

The unfunded accrued liability as of December 31, 2016 (see Table 6) is projected to the beginning of the fiscal year for which the contributions are being calculated. This allows the 2016 valuation to take into account the expected future contributions that are based on past valuations. The projected unfunded accrued liability is amortized over the appropriate period.

Division 10 - Admn Empl

Table 10-10: Layered Amortization Schedule

Type of UAL	Date Established	Original Balance	Original Amortization Period**	Amounts for Fiscal Year Beginning 1/1/2018		
				Outstanding UAL Balance*	Amortization Period**	Amortization Payment
Initial	12/31/2015	\$ 1,684,378	23	\$ 1,722,764	22	\$ 117,480
Gain/Loss	12/31/2016	(697,760)	22	(751,836)	22	(51,276)
Total				\$ 970,928		\$ 66,204

* This is the remaining balance as of the valuation date, projected to the beginning of the fiscal year shown above.

** Please see the [Appendix](#) on the MERS website for a description of the amortization policy.

The unfunded accrued liability as of December 31, 2016 (see Table 6) is projected to the beginning of the fiscal year for which the contributions are being calculated. This allows the 2016 valuation to take into account the expected future contributions that are based on past valuations. The projected unfunded accrued liability is amortized over the appropriate period.

Division HA - Admin Empl hired aftr 8/1/10

Table 10-HA: Layered Amortization Schedule

Type of UAL	Date Established	Original Balance	Original Amortization Period**	Amounts for Fiscal Year Beginning 1/1/2018		
				Outstanding UAL Balance*	Amortization Period**	Amortization Payment
Gain/Loss	12/31/2016	(7,378)	15	(7,950)	15	(708)
Total				\$ (7,950)		\$ (708)

* This is the remaining balance as of the valuation date, projected to the beginning of the fiscal year shown above.

** Please see the [Appendix](#) on the MERS website for a description of the amortization policy.

The unfunded accrued liability as of December 31, 2016 (see Table 6) is projected to the beginning of the fiscal year for which the contributions are being calculated. This allows the 2016 valuation to take into account the expected future contributions that are based on past valuations. The projected unfunded accrued liability is amortized over the appropriate period.

Division HB - General hired af 8/1/2010

Table 10-HB: Layered Amortization Schedule

Type of UAL	Date Established	Original Balance	Original Amortization Period**	Amounts for Fiscal Year Beginning 1/1/2018		
				Outstanding UAL Balance*	Amortization Period**	Amortization Payment
Gain/Loss	12/31/2016	2,903	15	3,128	15	276
Total				\$ 3,128		\$ 276

* This is the remaining balance as of the valuation date, projected to the beginning of the fiscal year shown above.

** Please see the [Appendix](#) on the MERS website for a description of the amortization policy.

The unfunded accrued liability as of December 31, 2016 (see Table 6) is projected to the beginning of the fiscal year for which the contributions are being calculated. This allows the 2016 valuation to take into account the expected future contributions that are based on past valuations. The projected unfunded accrued liability is amortized over the appropriate period.

GASB 68 Information

The following information has been prepared to provide some of the information necessary to complete GASB Statement No. 68 disclosures. Statement 68 is effective for fiscal years beginning after June 15, 2014. Additional resources, including an Implementation Guide, are available at www.mersofmich.com.

Actuarial Valuation Date:	12/31/2016
Measurement Date of Total Pension Liability (TPL):	12/31/2016

At 12/31/2016, the following employees were covered by the benefit terms:

Inactive employees or beneficiaries currently receiving benefits:	44
Inactive employees entitled to but not yet receiving benefits:	13
Active employees:	<u>26</u>
	83

Total Pension Liability as of 12/31/2015 measurement date:	\$	13,361,398
Total Pension Liability as of 12/31/2016 measurement date:	\$	14,040,293
Service Cost for the year ending on the 12/31/2016 measurement date:	\$	153,625

Change in the Total Pension Liability due to:

- Benefit changes ¹ :	\$	0
- Differences between expected and actual experience ² :	\$	187,810
- Changes in assumptions ² :	\$	0

¹ A change in liability due to benefit changes is immediately recognized when calculating pension expense for the year.

² Changes in liability due to differences between actual and expected experience, and changes in assumptions, are recognized in pension expense over the average remaining service lives of all employees.

Average expected remaining service lives of all employees (active and inactive):	2
Covered employee payroll: (Needed for Required Supplementary Information)	\$ 1,294,335

Sensitivity of the Net Pension Liability to changes in the discount rate:

	1% Decrease (7.00%)	Current Discount Rate (8.00%)	1% Increase (9.00%)
Change in Net Pension Liability as of 12/31/2016:	\$ 1,687,137	-	\$ (1,418,751)

Note: The current discount rate shown for GASB 68 purposes is higher than the MERS assumed rate of return. This is because for GASB 68 purposes, the discount rate must be gross of administrative expenses, whereas for funding purposes it is net of administrative expenses.

GASB 68 Information

This page is for those municipalities who need to “roll-forward” their total pension liability due to the timing of completion of the actuarial valuation in relation to their fiscal year-end.

The following information has been prepared to provide some of the information necessary to complete GASB Statement No. 68 disclosures. Statement 68 is effective for fiscal years beginning after June 15, 2014. Additional resources, including an Implementation Guide, are available at www.mersofmich.com.

Actuarial Valuation Date:	12/31/2016
Measurement Date of Total Pension Liability (TPL):	12/31/2017

At 12/31/2016, the following employees were covered by the benefit terms:

Inactive employees or beneficiaries currently receiving benefits:	44
Inactive employees entitled to but not yet receiving benefits:	13
Active employees:	<u>26</u>
	83

Total Pension Liability as of 12/31/2016 measurement date:	\$	13,808,476
Total Pension Liability as of 12/31/2017 measurement date:	\$	14,572,144
Service Cost for the year ending on the 12/31/2017 measurement date:	\$	152,090
Change in the Total Pension Liability due to:		
- Benefit changes ¹ :	\$	0
- Differences between expected and actual experience ² :	\$	250,363
- Changes in assumptions ² :	\$	0

¹ A change in liability due to benefit changes is immediately recognized when calculating pension expense for the year.

² Changes in liability due to differences between actual and expected experience, and changes in assumptions, are recognized in pension expense over the average remaining service lives of all employees.

Average expected remaining service lives of all employees (active and inactive):	2
Covered employee payroll: (Needed for Required Supplementary Information)	\$ 1,294,335

Sensitivity of the Net Pension Liability to changes in the discount rate:

	1% Decrease (7.00%)	Current Discount Rate (8.00%)	1% Increase (9.00%)
Change in Net Pension Liability as of 12/31/2017:	\$ 1,713,354	-	\$ (1,443,285)

Note: The current discount rate shown for GASB 68 purposes is higher than the MERS assumed rate of return. This is because for GASB 68 purposes, the discount rate must be gross of administrative expenses, whereas for funding purposes it is net of administrative expenses.

Benefit Provision History

The following benefit provision history is provided by MERS. Any corrections to this history or discrepancies between this information and information displayed elsewhere in the valuation report should be reported to MERS. All provisions are listed by date of adoption.

01 - General

12/1/2016	Service Credit Purchase Estimates - Yes
8/1/2010	Member Contribution Rate 4.00%
9/1/2007	Exclude Temporary Employees requiring less than 12 months
2/1/2000	Benefit RS 50 (50% Post-Ret. Spouse Benefits)
2/1/2000	Benefit B-4 (80% max)
2/1/2000	Member Contribution Rate 2.00%
2/1/2000	E2 2.5% COLA for future retirees (02/01/2000)
1/1/1998	Flexible E \$1.67 Monthly COLA Adopted (01/01/1998)
6/2/1993	Covered by Act 88
1/1/1992	Flexible E 2% COLA Adopted (01/01/1992)
6/1/1991	Benefit B-3 (80% max)
1/1/1990	Flexible E 2% COLA Adopted (01/01/1990)
5/1/1988	Benefit C-2/Base B-1
5/1/1988	Member Contribution Rate 0.00%
7/1/1987	Benefit F55 (With 25 Years of Service)
1/1/1987	Flexible E 2% COLA Adopted (01/01/1987)
1/1/1976	Member Contribution Rate 2.00%
1/1/1972	Benefit C-1 (Old)
7/1/1964	Benefit FAC-5 (5 Year Final Average Compensation)
7/1/1964	10 Year Vesting
7/1/1964	Benefit C (Old)
7/1/1964	Member Contribution Rate 3.00% Under \$4,200.00 - Then 5.00%
7/1/1964	Fiscal Month - January

10 - Admn Empl

12/1/2016	Service Credit Purchase Estimates - Yes
9/1/2007	Exclude Temporary Employees requiring less than 12 months
1/1/2002	E2 2.5% COLA for future retirees (07/01/1998)
8/1/2001	Benefit RS 50 (50% Post-Ret. Spouse Benefits)
8/1/2001	Benefit B-4 (80% max)
8/1/2001	Member Contribution Rate 2.00%
2/7/2001	Temporary 24 Years & Out (02/07/2001 - 05/03/2001)
2/7/2001	Temporary Benefit RS 50 (50% Post-Ret. Spouse Benefits) (02/07/2001 - 05/03/2001)
2/7/2001	Temporary Benefit B-4 (80% max) (02/07/2001 - 05/03/2001)
7/1/1998	Benefit B-3 (80% max)
7/1/1998	Benefit F55 (With 25 Years of Service)
7/1/1998	Member Contribution Rate 3.00%
6/2/1993	Covered by Act 88
5/1/1988	Benefit FAC-5 (5 Year Final Average Compensation)
5/1/1988	10 Year Vesting

10 - Admn Empl

5/1/1988	Benefit C-2/Base B-1
7/1/1964	Fiscal Month - January

HA - Admin Empl hired aftr 8/1/10

10/1/2015	Hybrid Elapsed Time
8/1/2010	Benefit FAC-3 (3 Year Final Average Compensation)
8/1/2010	Loans
8/1/2010	Pickup
8/1/2010	Rollovers
8/1/2010	6 Year Vesting
8/1/2010	1.0% Multiplier
6/2/1993	Covered by ACT 88
7/1/1964	Fiscal Month - January

HB - General hired af 8/1/2010

10/1/2015	Hybrid Elapsed Time
8/1/2010	Benefit FAC-3 (3 Year Final Average Compensation)
8/1/2010	Loans
8/1/2010	Pickup
8/1/2010	Rollovers
8/1/2010	6 Year Vesting
8/1/2010	1.0% Multiplier
6/2/1993	Covered by ACT 88
7/1/1964	Fiscal Month - January

Plan Provisions, Actuarial Assumptions, and Actuarial Funding Method

Details on MERS plan provisions, actuarial assumptions, and actuarial methodology can be found in the [Appendix](#). Some actuarial assumptions are specific to this municipality and its divisions. These are listed below.

Increase in Final Average Compensation

Division	FAC Increase Assumption
All Divisions	2.00%

Withdrawal Rate Scaling Factor

Division	Withdrawal Rate Scaling Factor
All Divisions	100%

Miscellaneous and Technical Assumptions

Loads – None.