

LEGEND

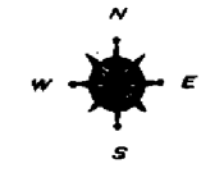
- COUNTY LINE
- CORPORATE LIMITS
- STATE TRUNKLINE
- COUNTY PRIMARY
- COUNTY LOCAL
- AJACENT COUNTY
- CITY OR VILLAGE STREET

PRIMARY ROAD SYSTEM IS 9.67 MILES

LOCAL ROAD SYSTEM IS 51.26 MILES

I HEREBY CERTIFY THAT THE ROADS SHOWN HEREON BY SYMBOL OR IN RED AS PRIMARY ROADS AND THOSE SHOWN HEREON BY SYMBOL OR IN GREEN AS LOCAL ROADS ARE IN USE AND ARE UNDER THE JURISDICTION OF THE COUNTY ROAD COMMISSION.

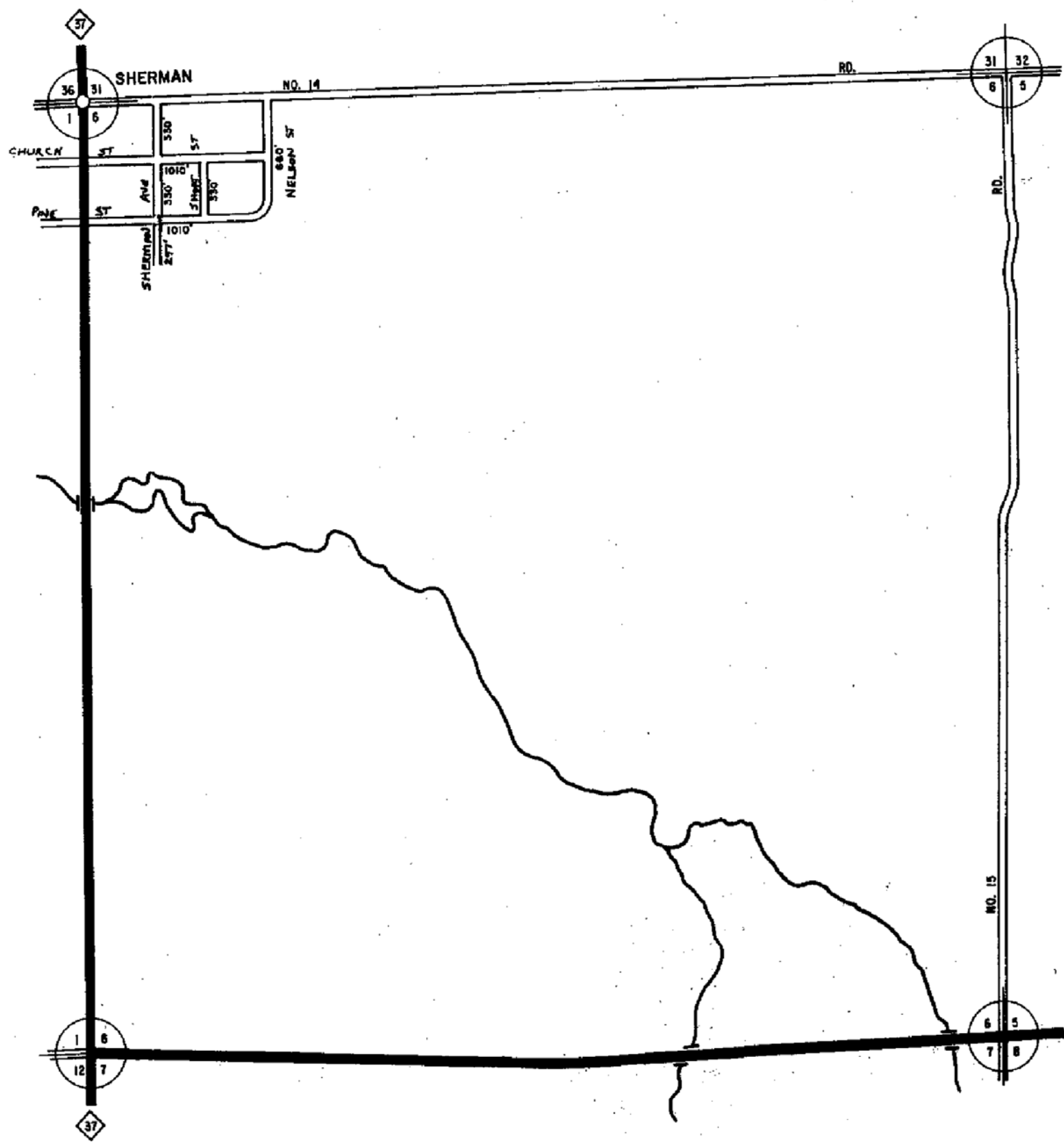
CHAIRMAN _____ DATE 1998
 REV. 5-1994
 Rev 2008



SCALE 0 1 MILE
 One inch Equals 3000 Ft.

ANTIOCH TWP.
 T 23 N - R 11 W
 WEXFORD COUNTY

13	14	15	16
9	10	11	12
5	6	7	8
1	2	3	4



LEGEND

COUNTY LINE	---
CORPORATE LIMITS	----
STATE TRUNKLINE	=====
COUNTY PRIMARY	-----
COUNTY LOCAL	-----
ADJACENT COUNTY	
CITY OR VILLAGE	-----
STREET	-----

TOTAL FEET 3967 EQUALS 0.75 MILES

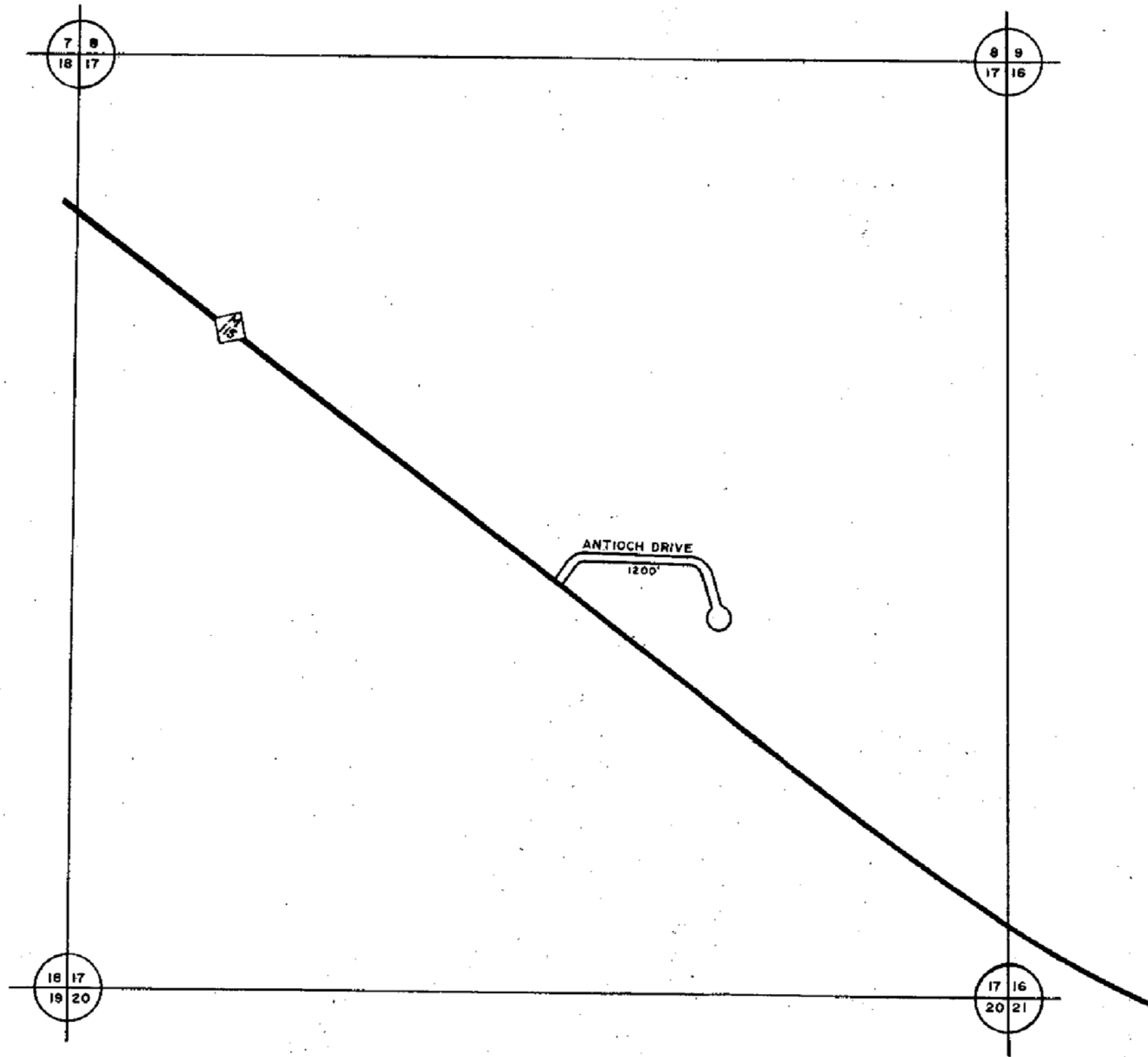
I HEREBY CERTIFY THAT THE ROADS SHOWN HEREON BY SYMBOL OR IN GREEN AS LOCAL ROADS ARE IN USE AND ARE UNDER THE JURISDICTION OF THE COUNTY ROAD COMMISSION.

CHAIRMAN _____ DATE 1928



SCALE 0 600 1200 FEET
One Inch equals 600 feet

TOWNSHIP ANTIOCH
SECTION 6 T. 23 N R. 11 W
COUNTY WEXFORD



LEGEND

COUNTY LINE	-----
CORPORATE LIMITS	-----
STATE TRUNKLINE	=====
COUNTY PRIMARY	-----
COUNTY LOCAL	-----
ADJACENT COUNTY	
CITY OR VILLAGE	-----
STREET	-----

TOTAL FEET 1200' EQUALS 0.25 MILES

I HEREBY CERTIFY THAT THE ROADS SHOWN HEREON BY SYMBOL OR IN GREEN AS LOCAL ROADS ARE IN USE AND ARE UNDER THE JURISDICTION OF THE COUNTY ROAD COMMISSION.

CHAIRMAN _____ DATE 1996



SCALE 0 600 1200 FEET
One inch equals 600 feet

TOWNSHIP Antioch
SECTION 17 T. 23N R. 11W
COUNTY Waxford