

LEGEND

- COUNTY LINE
- CORPORATE LIMITS
- STATE TRUNKLINE
- COUNTY PRIMARY
- COUNTY LOCAL
- ADJACENT COUNTY
- CITY OR VILLAGE STREET

PRIMARY ROAD SYSTEM IS 8.85 MILES

LOCAL ROAD SYSTEM IS 46.55 MILES

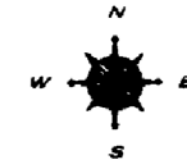
I HEREBY CERTIFY THAT THE ROADS SHOWN HEREON BY SYMBOL OR IN RED AS PRIMARY ROADS AND THOSE SHOWN HEREON BY SYMBOL OR IN GREEN AS LOCAL ROADS ARE IN USE AND ARE UNDER THE JURISDICTION OF THE COUNTY ROAD COMMISSION.

CHAIRMAN

1998

DATE

Rev. (1980)

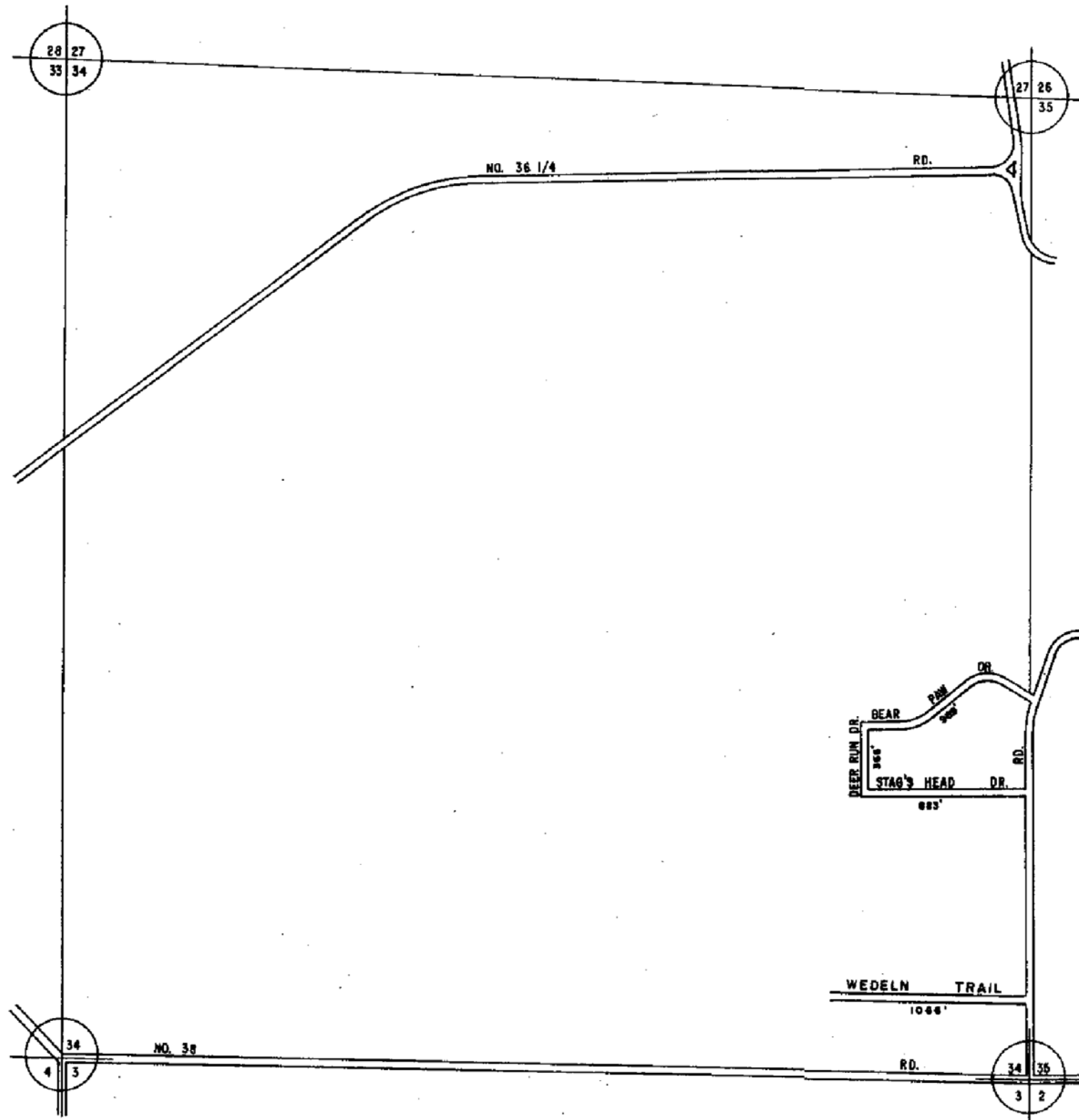


SCALE 0 1 MILE

One Inch Equals 3008 Ft.

SLAGLE TWP.
T22 N - R12 W
WEXFORD COUNTY

13	14	15	16
9	10	11	12
5	6	7	8
1	2	3	4



LEGEND

COUNTY LINE _____

CORPORATE LIMITS _____

STATE TRUNKLINE _____

COUNTY PRIMARY _____

COUNTY LOCAL _____

ADJACENT COUNTY _____

CITY OR VILLAGE _____

STREET _____

TOTAL FEET 2904 EQUALS 0.68 MILES

I HEREBY CERTIFY THAT THE ROADS SHOWN HEREON BY SYMBOL OR IN GREEN AS LOCAL ROADS ARE IN USE AND ARE UNDER THE JURISDICTION OF THE COUNTY ROAD COMMISSION.

CHAIRMAN _____ DATE 1998

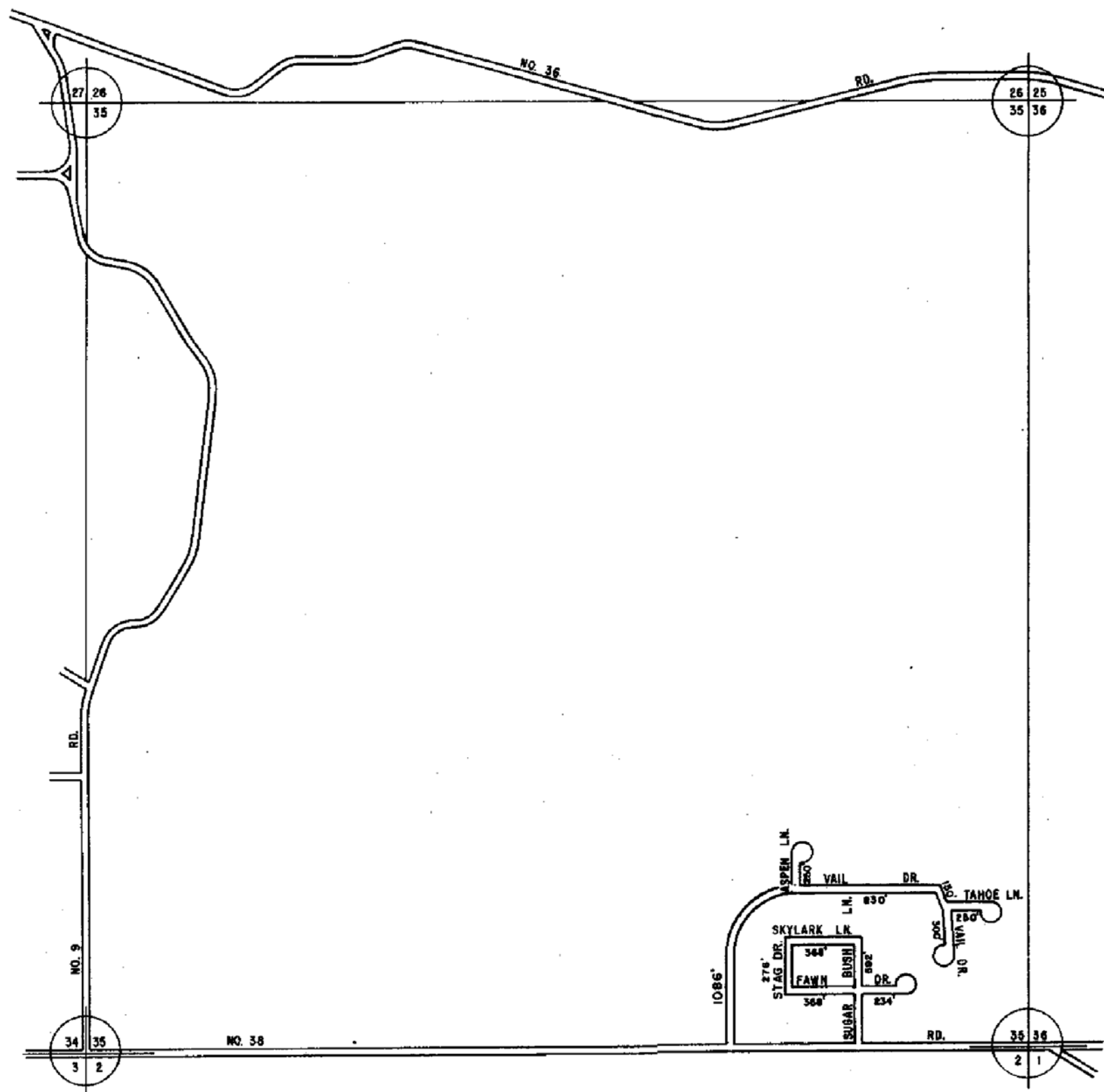


SCALE 0 600 1200 FEET
One inch equals 600 feet

TOWNSHIP SLAGLE

SECTION 34 T. 22 N R. 12 W

COUNTY WEXFORD



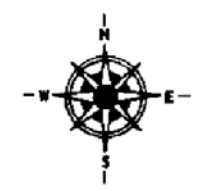
LEGEND

COUNTY LINE	-----
CORPORATE LIMITS	-----
STATE TRUNKLINE	=====
COUNTY PRIMARY	-----
COUNTY LOCAL	-----
ADJACENT COUNTY	
CITY OR VILLAGE	-----
STREET	-----

TOTAL FEET 4684 EQUALS 0.89 MILES

I HEREBY CERTIFY THAT THE ROADS SHOWN HEREON BY SYMBOL OR IN GREEN AS LOCAL ROADS ARE IN USE AND ARE UNDER THE JURISDICTION OF THE COUNTY ROAD COMMISSION.

CHAIRMAN _____ DATE 1098
Rev. (1980)



TOWNSHIP SLAGLE
SECTION 35 T. 22 N R. 12 W
COUNTY WEXFORD