

LEGEND

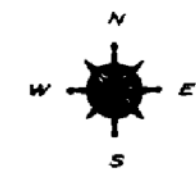
- COUNTY LINE
- CORPORATE LIMITS
- STATE TRUNKLINE
- COUNTY PRIMARY
- COUNTY LOCAL
- ADJACENT COUNTY
- CITY OR VILLAGE STREET

PRIMARY ROAD SYSTEM IS 7.64 MILES

LOCAL ROAD SYSTEM IS 51.69 MILES

I HEREBY CERTIFY THAT THE ROADS SHOWN HEREON BY SYMBOL OR IN RED AS PRIMARY ROADS AND THOSE SHOWN HEREON BY SYMBOL OR IN GREEN AS LOCAL ROADS ARE IN USE AND ARE UNDER THE JURISDICTION OF THE COUNTY ROAD COMMISSION.

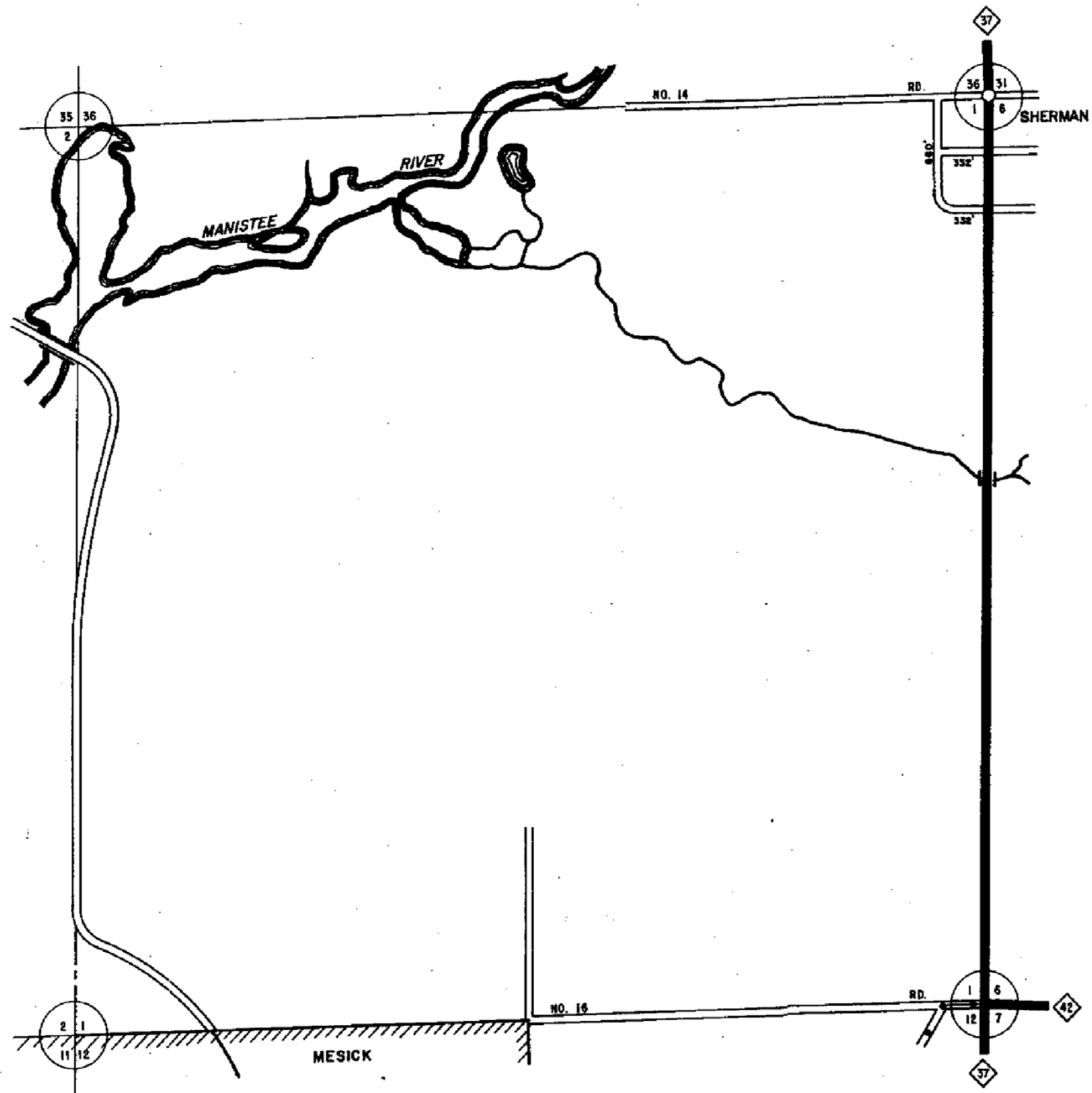
CHAIRMAN _____ DATE 1998
 REV. 2, 1998



SCALE 0 1 MILE
 One Inch Equals 3000 Ft.

SPRINGVILLE TWP.
 T 23 N - R 12 W
 WEXFORD COUNTY

13	14	15	16
9	10	11	12
5	6	7	8
1	2	3	4



LEGEND

COUNTY LINE	-----
CORPORATE LIMITS	-----
STATE TRUNKLINE	=====
COUNTY PRIMARY	-----
COUNTY LOCAL	-----
ADJACENT COUNTY	
CITY OR VILLAGE STREET	-----

TOTAL FEET 1924 EQUALS 0.25 MILES

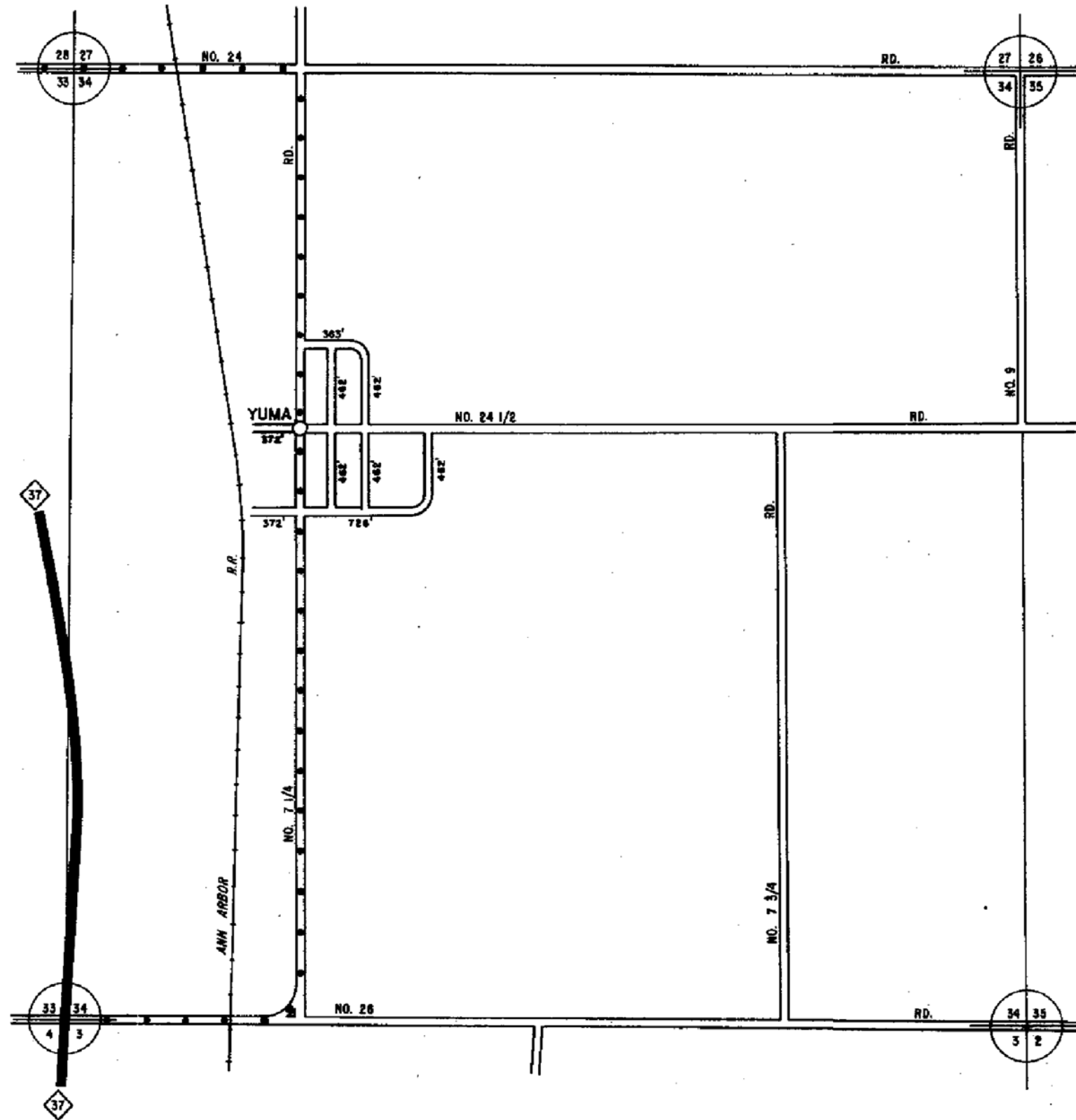
I HEREBY CERTIFY THAT THE ROADS SHOWN HEREON BY SYMBOL OR IN GREEN AS LOCAL ROADS ARE IN USE AND ARE UNDER THE JURISDICTION OF THE COUNTY ROAD COMMISSION.

CHAIRMAN _____ DATE 1949



SCALE 0 600 1200 FEET
One inch equals 600 feet

TOWNSHIP SPRINGVILLE
SECTION 1 T. 23 N R. 12 W
COUNTY WEXFORD



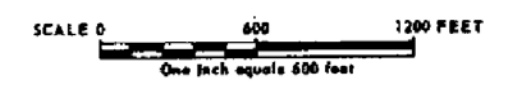
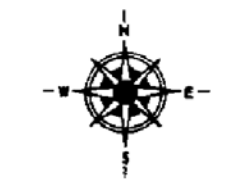
LEGEND

COUNTY LINE	-----
CORPORATE LIMITS	-----
STATE TRUNKLINE	=====
COUNTY PRIMARY	-----
COUNTY LOCAL	-----
ADJACENT COUNTY	
CITY OR VILLAGE	-----
STREET	-----

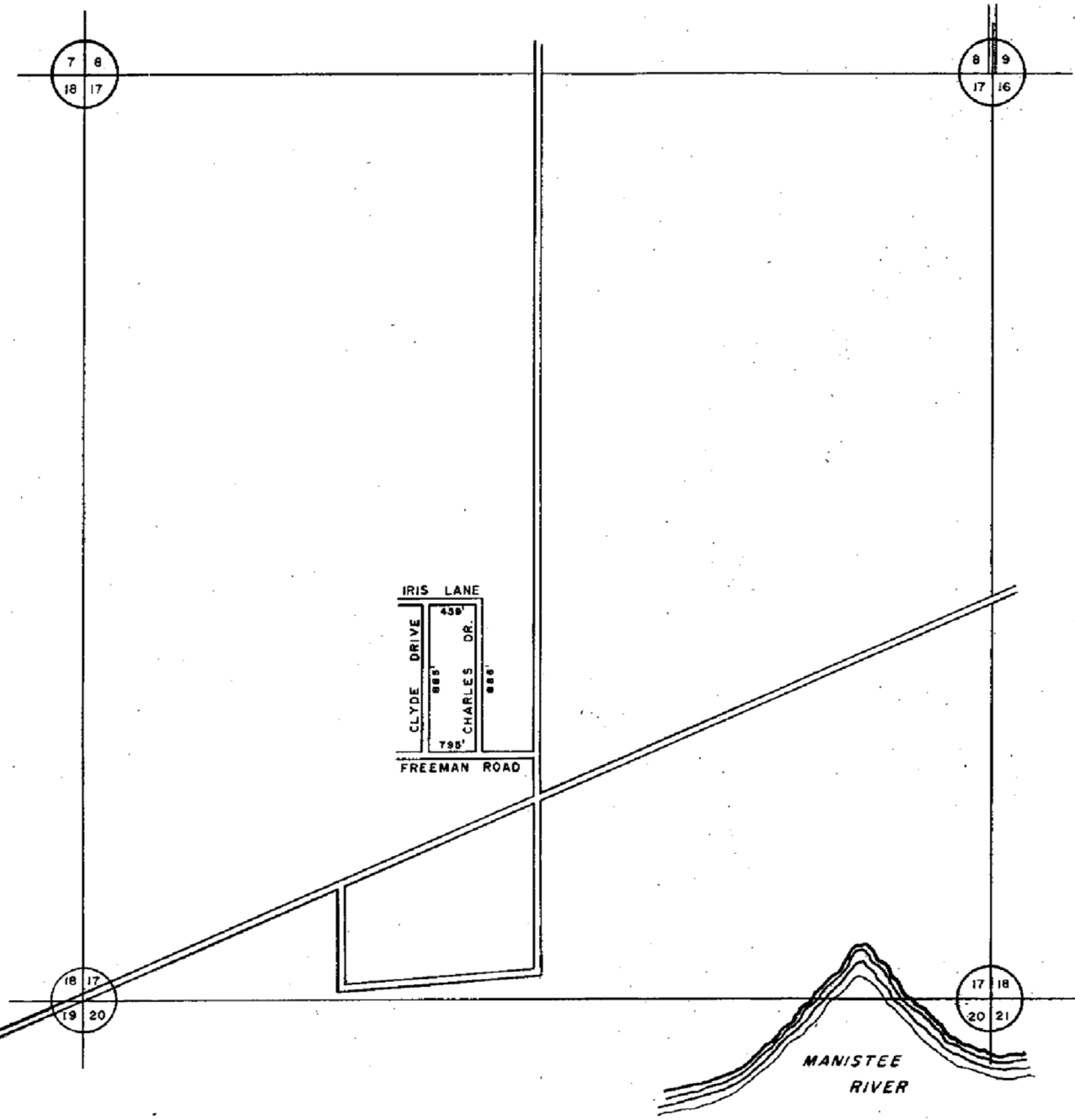
TOTAL FEET ~~4143~~ EQUALS 0.78 MILES

I HEREBY CERTIFY THAT THE ROADS SHOWN HEREON BY SYMBOL OR IN GREEN AS LOCAL ROADS ARE IN USE AND ARE UNDER THE JURISDICTION OF THE COUNTY ROAD COMMISSION.

CHAIRMAN _____ DATE 1998



TOWNSHIP SPRINGVILLE
 SECTION 34 T. 23 N R. 12 W
 COUNTY WEXFORD



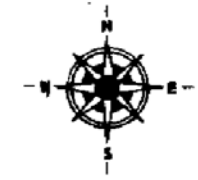
LEGEND

COUNTY LINE	---
CORPORATE LIMITS	----
STATE TRUNKLINE	=====
COUNTY PRIMARY	-----
COUNTY LOCAL	-----
ADJACENT COUNTY	
CITY OR VILLAGE	-----
STREET	-----

TOTAL FEET 9025 EQUALS 0.97 MILES

I HEREBY CERTIFY THAT THE ROADS SHOWN HEREON BY SYMBOL OR IN GREEN AS LOCAL ROADS ARE IN USE AND ARE UNDER THE JURISDICTION OF THE COUNTY ROAD COMMISSION.

CHAIRMAN _____ DATE 1998
REV 2, 1998



SCALE 0 600 1200 FEET
One inch equals 600 feet

TOWNSHIP SPRINGVILLE
SECTION 17 T. 23 N. R. 12 W
COUNTY WEXFORD