

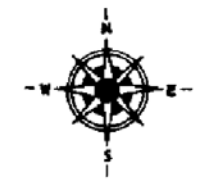
LEGEND	
COUNTY LINE	----
CORPORATE LIMITS	-----
STATE TRUNKLINE	=====
COUNTY PRIMARY	=====
COUNTY LOCAL	=====
ADJACENT COUNTY	=====
CITY OR VILLAGE	=====
STREET	=====

TOTAL FEET 1401 EQUALS 0.27 MILES

I HEREBY CERTIFY THAT THE ROADS SHOWN HEREON BY SYMBOL OR IN GREEN AS LOCAL ROADS ARE IN USE AND ARE UNDER THE JURISDICTION OF THE COUNTY ROAD COMMISSION.

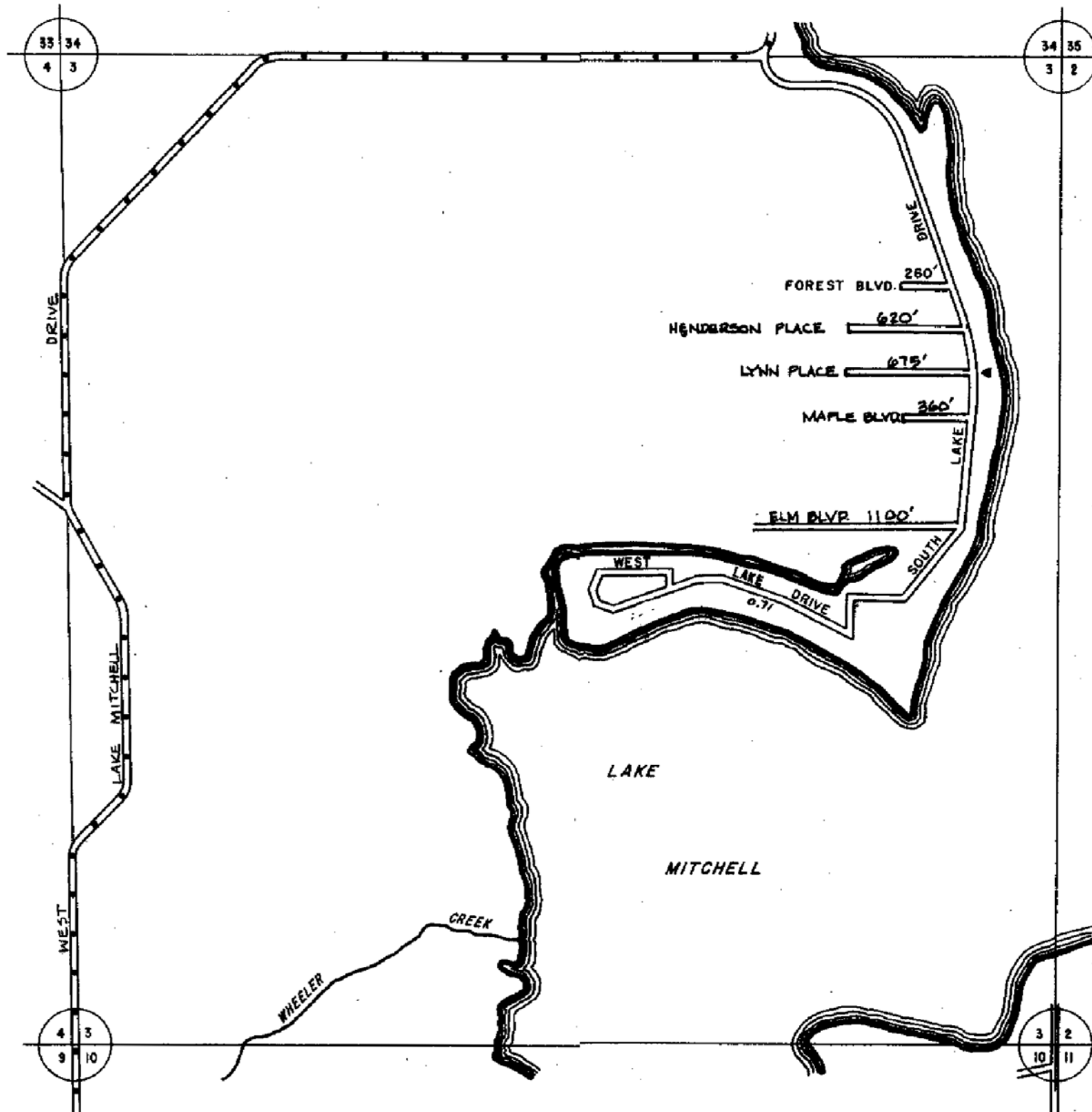
\_\_\_\_\_  
CHAIRMAN

1998  
DATE



SCALE 0 600 1200 FEET  
One inch equals 600 feet

TOWNSHIP CHERRY GROVE  
SECTION 2 T. 21 N R. 10 W  
COUNTY WEXFORD



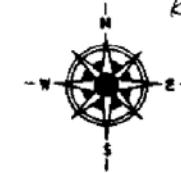
LEGEND

COUNTY LINE	---
CORPORATE LIMITS	---
STATE TRUNKLINE	---
COUNTY PRIMARY	---
COUNTY LOCAL	---
ADJACENT COUNTY	---
CITY OR VILLAGE STREET	---

TOTAL FEET: 6743 EQUALS 1.28 MILES

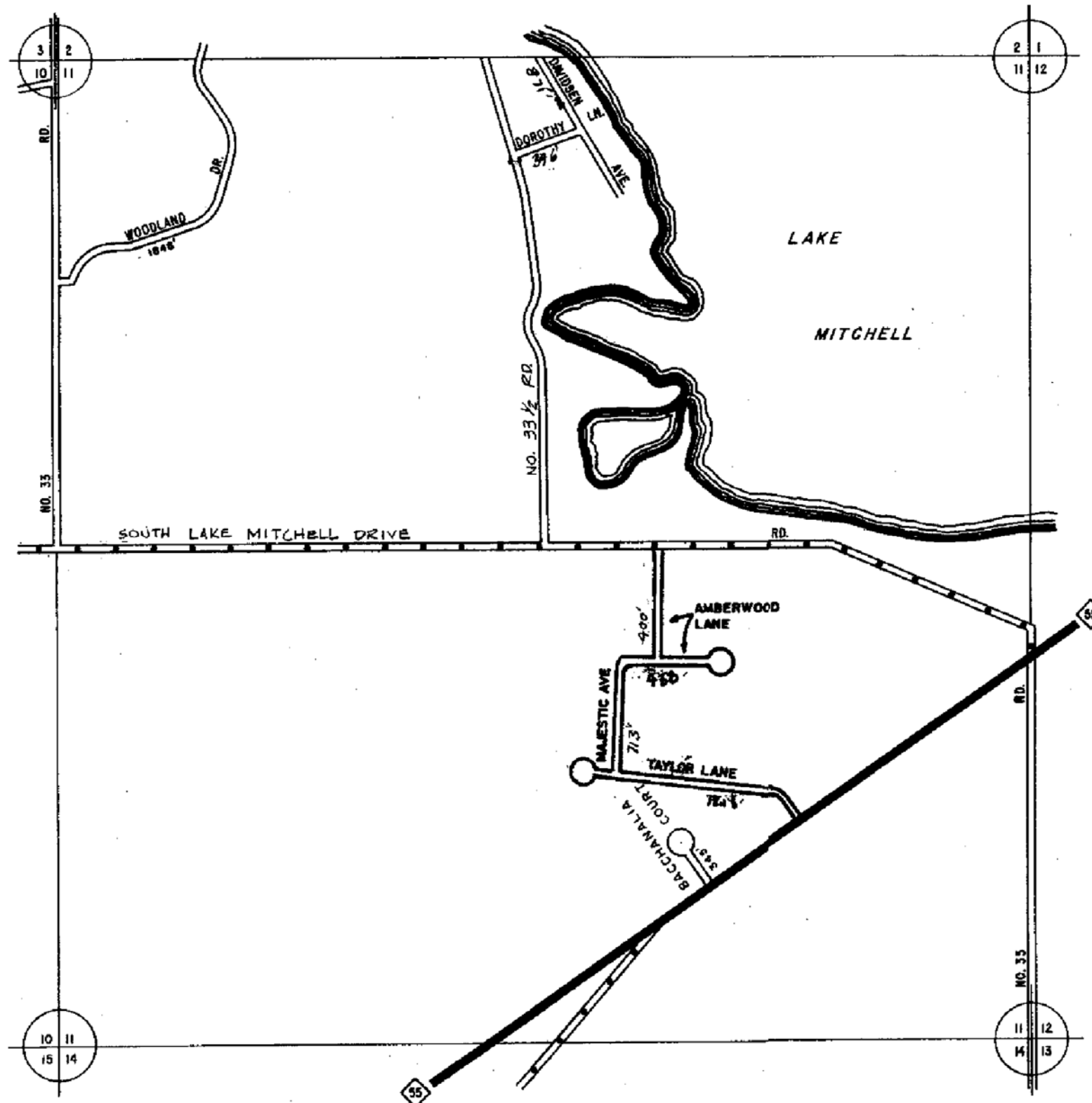
I HEREBY CERTIFY THAT THE ROADS SHOWN HEREON BY SYMBOL OR IN GREEN AS LOCAL ROADS ARE IN USE AND ARE UNDER THE JURISDICTION OF THE COUNTY ROAD COMMISSION.

CHAIRMAN 1988  
DATE  
Rev (1980)  
Rev. 1991  
" (1996)  
Rev 2004



SCALE 0 600 1200 FEET  
One Inch equals 600 feet

TOWNSHIP CHERRY GROVE  
SECTION 3 T. 21 N. R. 10 W.  
COUNTY WEXFORD



LEGEND  
 COUNTY LINE  
 CORPORATE LIMITS  
 STATE TRUNKLINE  
 COUNTY PRIMARY  
 COUNTY LOCAL  
 ADJACENT COUNTY  
 CITY OR VILLAGE  
 STREET

TOTAL FEET 6215 EQUALS 1.18 MILES

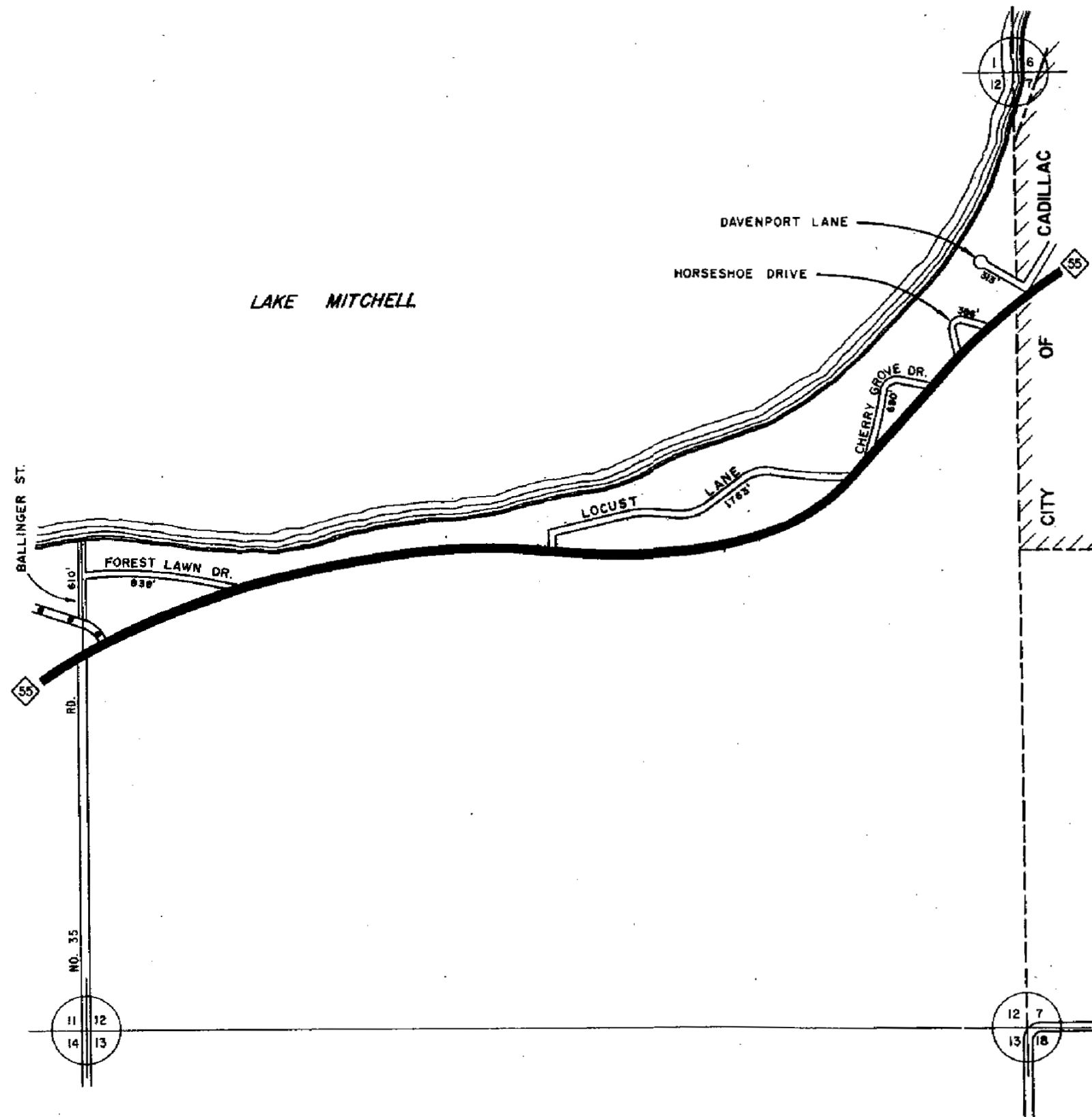
6215 1.18  
 I HEREBY CERTIFY THAT THE ROADS  
 SHOWN HEREON BY SYMBOL OR IN GREEN  
 AS LOCAL ROADS ARE IN USE AND ARE  
 UNDER THE JURISDICTION OF THE COUNTY  
 ROAD COMMISSION.

CHAIRMAN 1998  
 DATE  
 REV. 1998  
 Rev 2004



SCALE 0 400 1200 FEET  
 One inch equals 600 feet

TOWNSHIP CHERRY GROVE  
 SECTION 11 T. 21 N. R. 10 W.  
 COUNTY WEXFORD



LEGEND

COUNTY LINE	----
CORPORATE LIMITS	----
STATE TRUNKLINE	=====
COUNTY PRIMARY	-----
COUNTY LOCAL	-----
ADJACENT COUNTY	
CITY OR VILLAGE STREET	-----

TOTAL FEET 4600 EQUALS 0.87 MILES

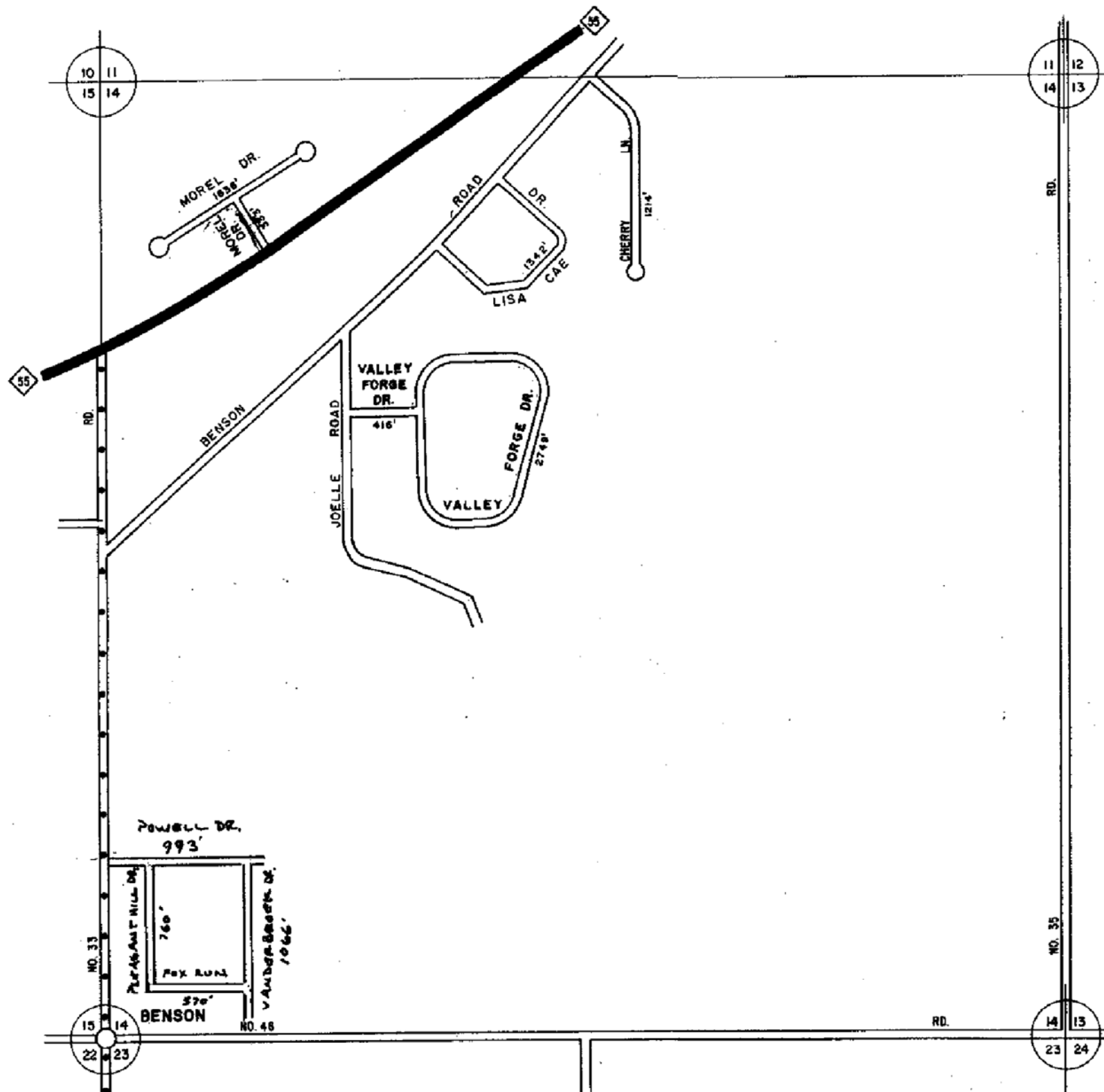
I HEREBY CERTIFY THAT THE ROADS SHOWN HEREON BY SYMBOL OR IN GREEN AS LOCAL ROADS ARE IN USE AND ARE UNDER THE JURISDICTION OF THE COUNTY ROAD COMMISSION.

CHAIRMAN 1996  
DATE  
Rev. (1960)



SCALE 0 600 1200 FEET  
One inch equals 600 feet

TOWNSHIP CHERRY GROVE  
SECTION 12 T. 21 N R. 10 W  
COUNTY WEXFORD



LEGEND

COUNTY LINE	----
CORPORATE LIMITS	----
STATE TRUNKLINE	=====
COUNTY PRIMARY	-----
COUNTY LOCAL	-----
ADJACENT COUNTY	=====
CITY OR VILLAGE	=====
STREET	-----

TOTAL FEET 11279 2.14  
EQUALS MILES

I HEREBY CERTIFY THAT THE ROADS SHOWN HEREON BY SYMBOL OR IN GREEN AS LOCAL ROADS ARE IN USE AND ARE UNDER THE JURISDICTION OF THE COUNTY ROAD COMMISSION.

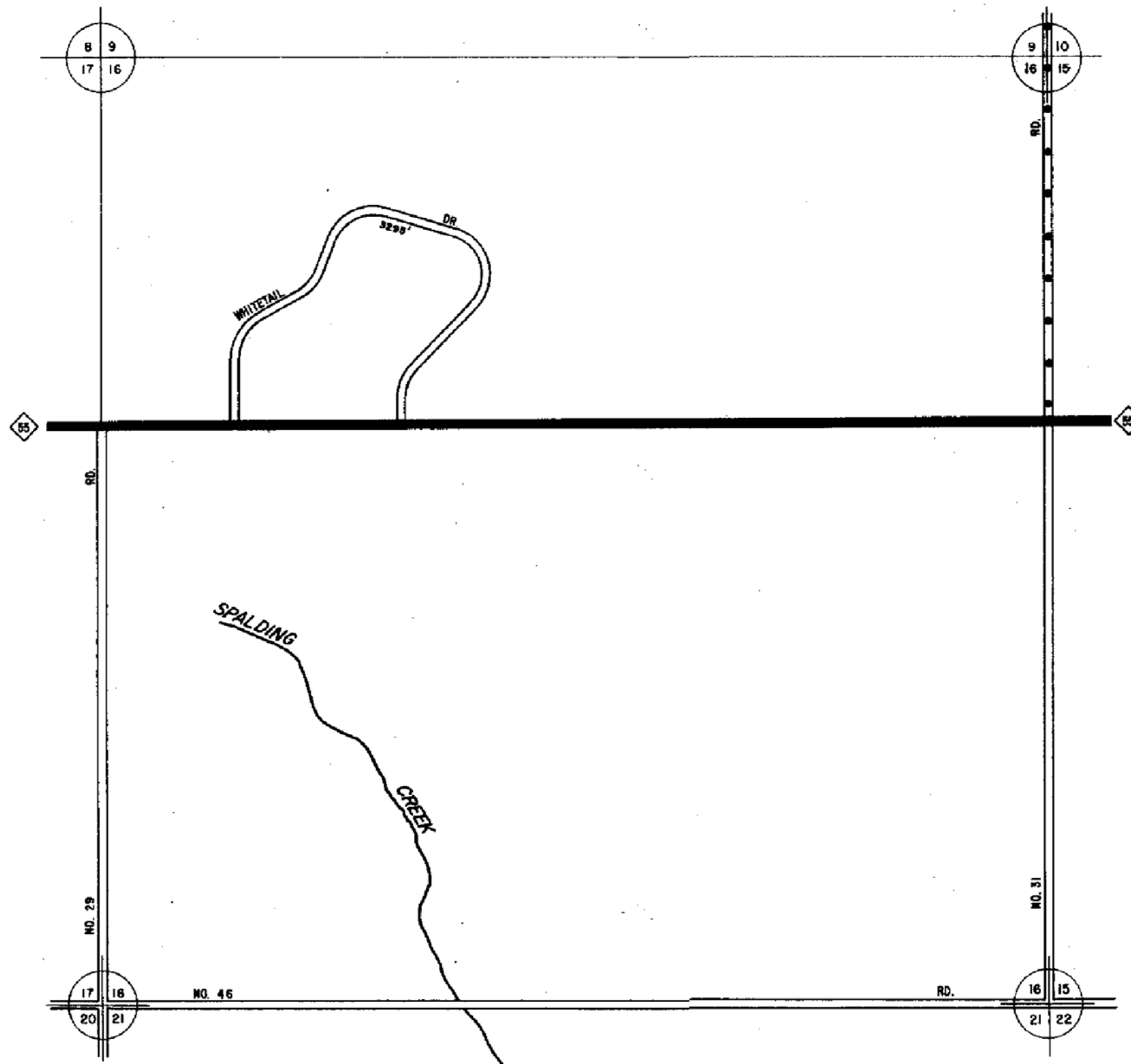
CHAIRMAN 1998  
DATE  
REV. (1996)



SCALE 0 600 1200 FEET  
One inch equals 600 feet

TOWNSHIP CHERRY GROVE  
SECTION 14 T. 21N R. 10W  
COUNTY WEXFORD

REV. 11-6-05 + 3389 BENSON CORNERS  
ELL ESTATE



LEGEND

COUNTY LINE	----
CORPORATE LIMITS	----
STATE TRUNKLINE	=====
COUNTY PRIMARY	-----
COUNTY LOCAL	-----
ADJACENT COUNTY	
CITY OR VILLAGE STREET	-----

TOTAL FEET ~~3295~~ EQUALS 0.62 MILES

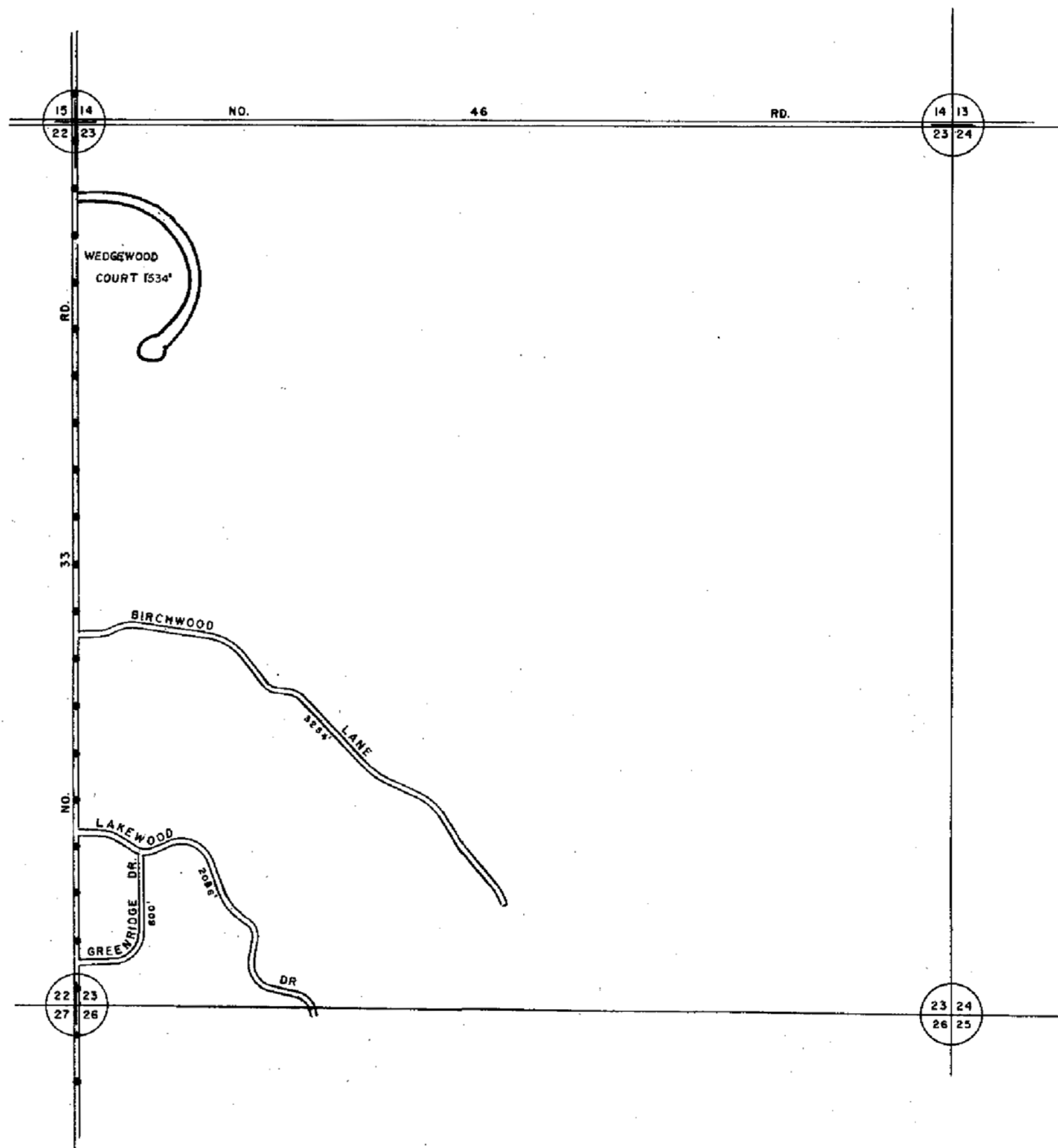
I HEREBY CERTIFY THAT THE ROADS SHOWN HEREON BY SYMBOL OR IN GREEN AS LOCAL ROADS ARE IN USE AND ARE UNDER THE JURISDICTION OF THE COUNTY ROAD COMMISSION.

CHAIRMAN 1938  
DATE



SCALE 0 600 1200 FEET  
One inch equals 600 feet

TOWNSHIP CHERRY GROVE  
SECTION 16 T. 21 N R. 10 W  
COUNTY WEXFORD



LEGEND

COUNTY LINE	----
CORPORATE LIMITS	----
STATE TRUNKLINE	=====
COUNTY PRIMARY	-----
COUNTY LOCAL	-----
ADJACENT COUNTY	=====
CITY OR VILLAGE STREET	-----

TOTAL FEET 7624' EQUALS 1.44 MILES

I HEREBY CERTIFY THAT THE ROADS SHOWN HEREON BY SYMBOL OR IN GREEN AS LOCAL ROADS ARE IN USE AND ARE UNDER THE JURISDICTION OF THE COUNTY ROAD COMMISSION.

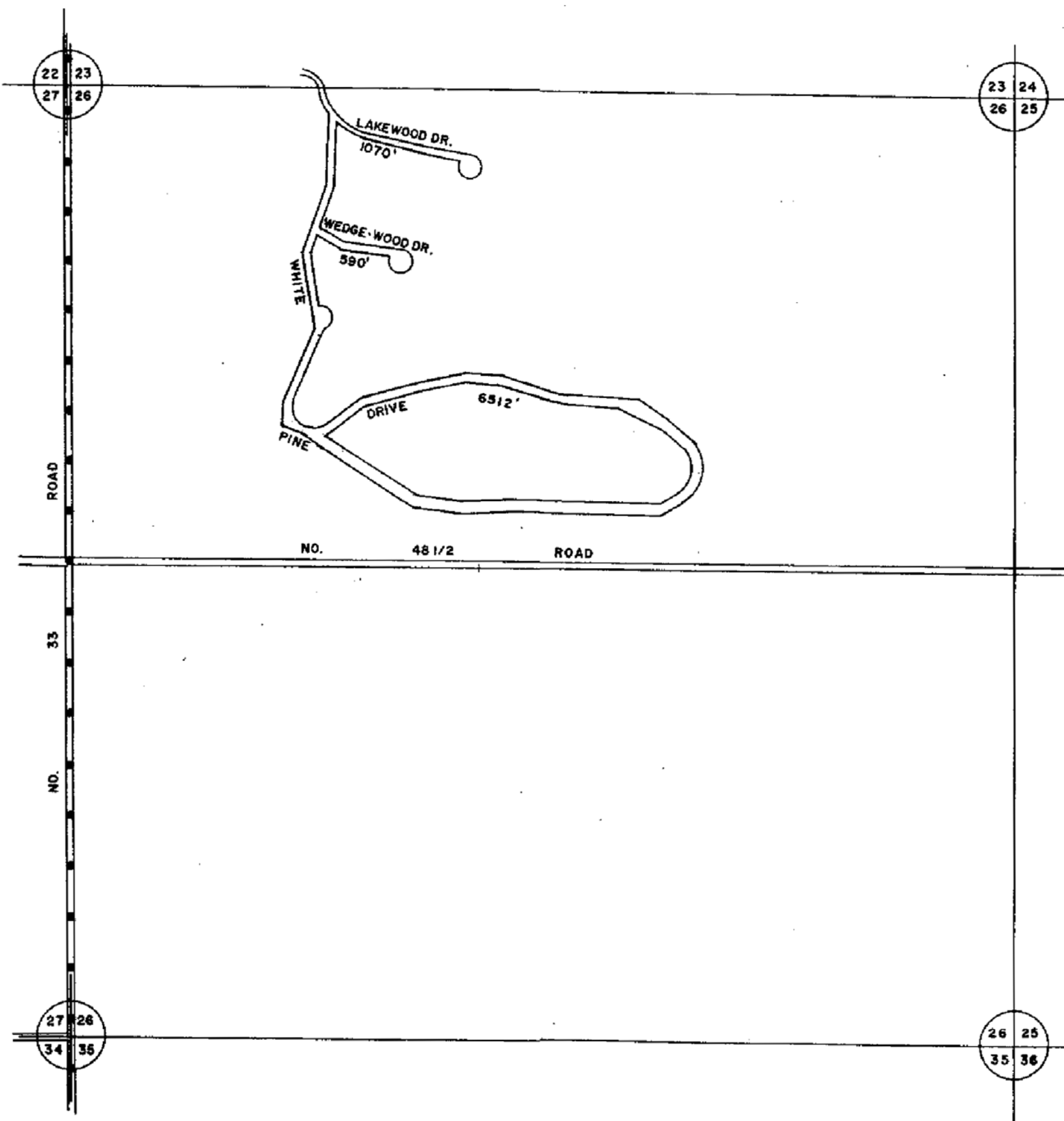
CHAIRMAN	1996
	DATE
	1981 (New)
	REV. 1991
	REV. 1, 1993
	REV 2006



SCALE 0 600 1200 FEET  
One inch equals 600 feet

TOWNSHIP CHERRY GROVE  
SECTION 23 T. 21 N R. 10 W  
COUNTY WEXFORD





**LEGEND**

COUNTY LINE	----
CORPORATE LIMITS	----
STATE TRUNKLINE	=====
COUNTY PRIMARY	=====
COUNTY LOCAL	=====
ADJACENT COUNTY	=====
CITY OR VILLAGE STREET	=====

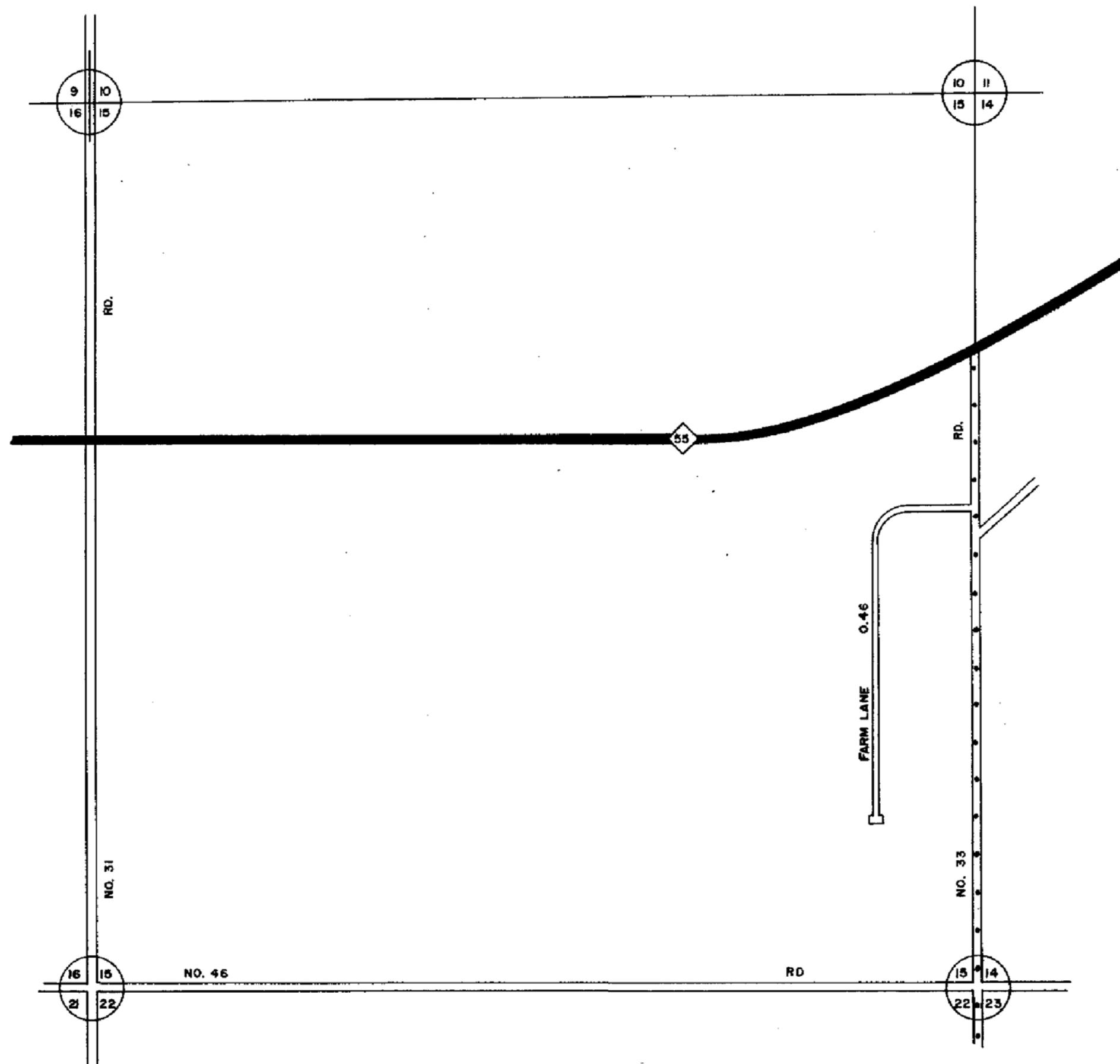
**LOCAL ROAD SYSTEM**  
 TOTAL FEET 8172 EQUALS 1.55 MILES  
 MILEAGES SHALL BE TO THE NEAREST ONE HUNDREDTH OF A MILE.



CHAIRMAN \_\_\_\_\_ DATE 1998  
 REV. 1-1995  
 " 1996

REVISED BY \_\_\_\_\_  
 DATE 1, 1994

TOWNSHIP CHERRY GROVE  
 SECTION 26 T. 21 N. R. 10 W.  
 COUNTY WEXFORD



LEGEND

COUNTY LINE	---
CORPORATE LIMITS	----
STATE TRUNKLINE	=====
COUNTY PRIMARY	=====
COUNTY LOCAL	=====
ADJACENT COUNTY	=====
CITY OR VILLAGE	=====
STREET	=====

LOCAL ROAD SYSTEM  
 TOTAL FEET 2448 EQUALS 0.46 MILES  
 MILEAGES SHALL BE TO THE NEAREST ONE HUNDREDTH OF A MILE.



SCALE 0 400 1200 FEET  
 One inch equals 600 feet

CHAIRMAN 1998 DATE

NEW 5.1994

REVISED BY \_\_\_\_\_

DATE \_\_\_\_\_

TOWNSHIP CHERRY GROVE

SECTION 15 T. 21 N. R. 10 W

COUNTY WEXFORD

SHEET NUMBER 3

# URBAN AREA CERTIFICATION

## LEGEND

COUNTY LINE	---
CORPORATE LIMITS	---
STATE TRUNKLINE	==
COUNTY PRIMARY	==
COUNTY LOCAL	==
ADJACENT COUNTY	#####
CITY OR VILLAGE STREET	---
URBAN BOUNDARY	==

PRIMARY ROAD SYSTEM IS 3.96 MILES

LOCAL ROAD SYSTEM IS 2.47 MILES

I HEREBY CERTIFY THAT THE ROADS SHOWN HEREON BY SYMBOL OR IN RED AS PRIMARY ROADS AND THOSE SHOWN HEREON BY SYMBOL OR IN GREEN AS LOCAL ROADS ARE IN USE AND ARE UNDER THE JURISDICTION OF THE COUNTY ROAD COMMISSION.

CHAIRMAN

REVISED 3-10-04

SCALE: 1 INCH = 1,200 FEET



CHERRY GROVE TOWNSHIP, T21N-R10W

SHEET NUMBER 33

