

LEGEND

COUNTY LINE _____

CORPORATE LIMITS _____

STATE TRUNKLINE _____

COUNTY PRIMARY _____

COUNTY LOCAL _____

ADJACENT COUNTY _____

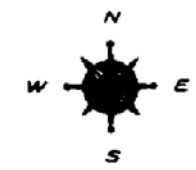
CITY OR VILLAGE STREET _____

PRIMARY ROAD SYSTEM IS 4.95 MILES

LOCAL ROAD SYSTEM IS 46.97 MILES

I HEREBY CERTIFY THAT THE ROADS SHOWN HEREON BY SYMBOL OR IN RED AS PRIMARY ROADS AND THOSE SHOWN HEREON BY SYMBOL OR IN GREEN AS LOCAL ROADS ARE IN USE AND ARE UNDER THE JURISDICTION OF THE COUNTY ROAD COMMISSION.

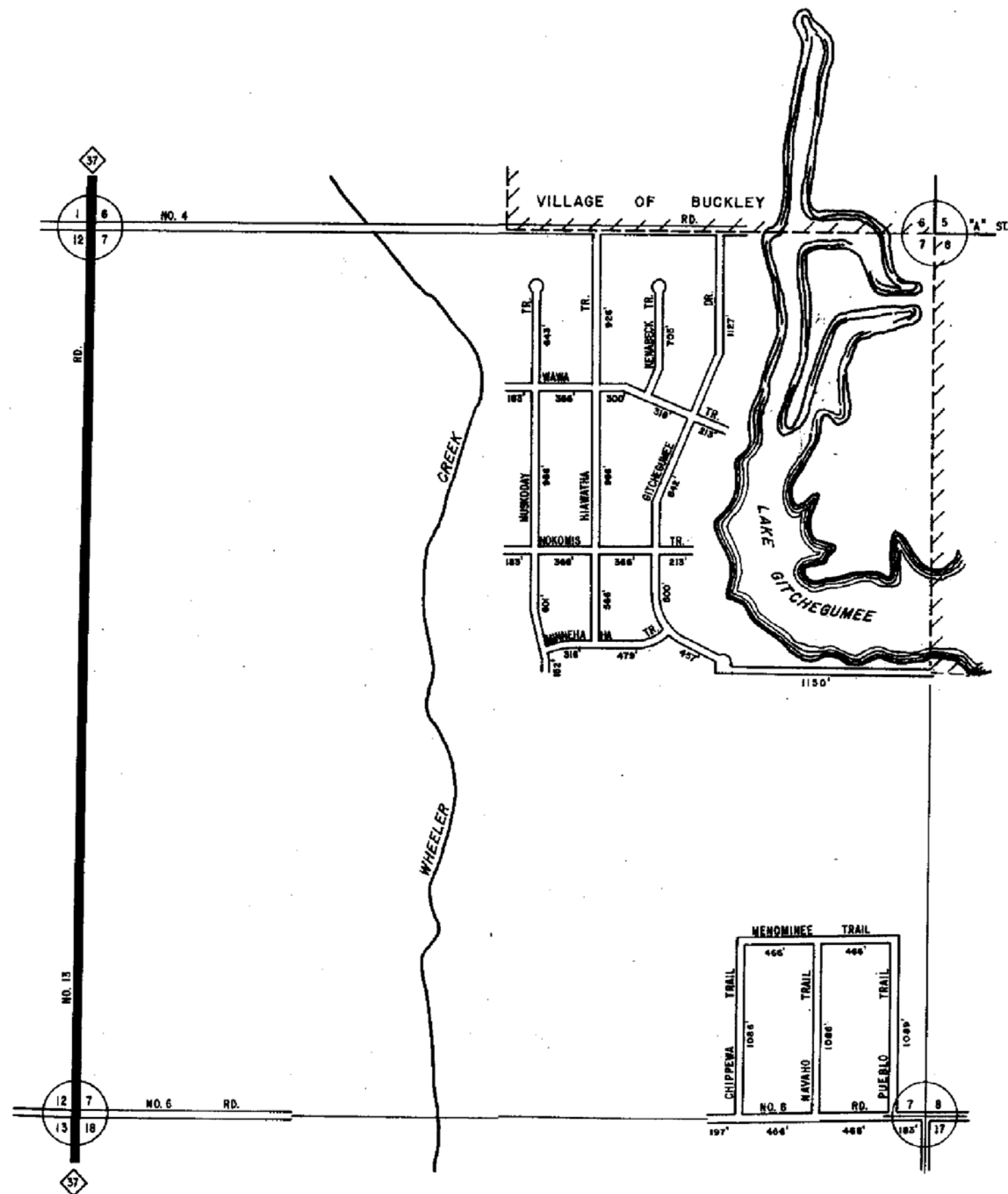
CHAIRMAN _____ DATE 1980
Rev. (1980)



SCALE 0 $\frac{1}{2}$ 1 MILE
One Inch Equals 3000 Ft.

HANOVER TWP.
T 24 N - R 11 W
WEXFORD COUNTY

13	14	15	16
9	10	11	12
5	6	7	8
1	2	3	4



LEGEND

COUNTY LINE
 CORPORATE LIMITS
 STATE TRUNKLINE
 COUNTY PRIMARY
 COUNTY LOCAL
 ADJACENT COUNTY
 CITY OR VILLAGE
 STREET

TOTAL FEET 15407 EQUALS 3.49 MILES

I HEREBY CERTIFY THAT THE ROADS SHOWN HEREON BY SYMBOL OR IN GREEN AS LOCAL ROADS ARE IN USE AND ARE UNDER THE JURISDICTION OF THE COUNTY ROAD COMMISSION.

CHAIRMAN 1980
 DATE
 Rev. (1980)



SCALE 0 600 1200 FEET
 One inch equals 600 feet

TOWNSHIP HANOVER
 SECTION 7 T. 24 N. R. 11 W
 COUNTY WEXFORD

